

**Intergovernmental Science-Policy
Platform on Biodiversity and
Ecosystem Services**Distr.: General
12 January 2018

English only

**Plenary of the Intergovernmental Science-Policy
Platform on Biodiversity and Ecosystem Services****Sixth session**

Medellin, Colombia, 18–24 March 2018

Item 5 of the provisional agenda*

**Report of the Executive Secretary on the implementation
of the first work programme for the period 2014–2018****Information on work related to capacity-building (deliverables
1 (a) and 1 (b))****Note by the secretariat**

1. In decision IPBES-2/5, section I, paragraph 1, the Plenary of the Intergovernmental Science-Policy Platform on Biodiversity and Ecosystem Services (IPBES) established a task force on capacity-building for the period 2014–2018. The terms of reference for the task force are set out in annex II to the decision. The primary purpose of the task force is to support the achievement of deliverables 1 (a) and 1 (b) of the first work programme in a manner that supports the implementation of the whole work programme.
2. In decision IPBES 5/1, section II, paragraph 1, the Plenary welcomed the Platform's capacity-building rolling plan, including its executive summary set out in annex I to the decision, noting that the rolling plan was a living document intended to guide the work of the Platform and collaboration among partners aimed at the implementation of deliverables 1 (a) and 1 (b) of the Platform's first work programme.
3. Information on the activities of the task force on capacity-building is set out in the report of the Executive Secretary on the implementation of the first work programme of the Platform (IPBES/6/2). The annex to the present note sets out further information on activities being carried out by the task force on capacity-building in addressing its mandate, including activities planned and conducted by the task force and partners under the rolling plan. The annex is presented without formal editing.

* IPBES/6/1.

Annex

Information on work related to capacity-building

I. Membership of the task force

1. The task force on capacity-building consists of the following members:

<i>Name</i>	<i>Country</i>	<i>Function</i>
Ivar Baste	Norway	Bureau member and co-chair of the task force
Spencer Linus Thomas	Grenada	Bureau vice-chair and co-chair of the task force
Rashad Allahverdiyev	Azerbaijan	Bureau member
Sebsebe Demissew	Ethiopia	Member of the Multidisciplinary Expert Panel*
Floyd Homer	Trinidad and Tobago	Member of the Multidisciplinary Expert Panel*
Carlos Joly	Brazil	Member of the Multidisciplinary Expert Panel*
Leng Guan Saw	Malaysia	Member of the Multidisciplinary Expert Panel*
Vinod Mathur	India	Member of the Multidisciplinary Expert Panel*
Rob J.J. Hendriks	The Netherlands	Expert
Prudence Galega	Cameroon	Expert
Nelio Bizzo	Brazil	Expert
Györgyi Bela	Hungary	Expert
Tesfaye Awas Feye	Ethiopia	Expert
Clarissa Arida	Philippines	Expert
Gladys Hernández	Cuba	Expert
Robert Kasisi	Canada	Expert
Zane Libiete	Latvia	Expert
Selim Louafi	France	Expert
Carmel Mbizvo	South Africa	Expert
Wendy Nelson	New Zealand	Expert
Ana Travizi	Croatia	Expert
Natalia Zamora	Costa Rica	Expert
Yousef Al-Hafedh	Saudi Arabia	Expert
Jin-Han Kim	Republic of Korea	Expert
Marie-Lucie Susini	Belgium	Expert

*The mandate of all members of the Multidisciplinary Expert Panel will come to an end at the close of the 6th session of the Plenary, on 24 March 2018. Members of the Multidisciplinary Expert Panel who are not re-elected will be replaced on the task force.

2. In accordance with the terms of reference for the task force, the co-chairs also invited resource persons to participate in the meetings of the task force, following consultation with the Bureau. Representatives of a number of organizations and initiatives have been invited to participate in task force meetings as resource persons for addressing particular areas of work. These include the United Nations Development Programme, the United Nations Convention to Combat Desertification, the United Nations University Global Regional Centres of Expertise on Education for Sustainable Development Network, Global Biodiversity Information Facility, Sub-Global Assessment Network, Deutsche Gesellschaft für Internationale Zusammenarbeit, the Bio-Bridge Initiative under the Convention on Biological Diversity and IPBES task force on indigenous and local knowledge systems.

3. The work of the task force has been supported by the technical support unit of three staff members located at the Norwegian Environment Agency. The unit was established on 1 January 2015 and is provided fully as in-kind support by the Government of Norway.

II. Fifth meeting of the task force

4. The fifth meeting of the task force on capacity-building took place in Trondheim, Norway, from 26 to 28 April 2017.

5. The objectives of the meeting were to develop IPBES capacity-building activities to implement the rolling plan for the intersessional period 2017-2018, consolidate contributions under the rolling plan and strengthen collaboration with contributing organisations.

6. Prior to the meeting, and in line with the Plenary's requests, the task force invited organizations having indicated interest in supporting the capacity-building work of IPBES to participate in the meeting and indicate how they can contribute to the implementation of the rolling plan.

7. During the meeting, the task force entered into five collaborative initiatives, forming "task groups" with contributing organizations for the implementation of the rolling plan. The five groups will be working on the following:

(a) Task group 1: developing guidance regarding processes and mechanisms that support the implementation of the capacity-building rolling plan;

(b) Task group 2: developing a capacity-building web portal supporting the implementation of the capacity-building rolling plan;

(c) Task group 3: supporting the uptake of regional assessments;

(d) Task group 4: developing guidance on national and (sub) regional science-policy platforms and national and sub-regional assessments; and

(e) Task group 5: supporting increased use and development of IPBES learning materials for capacity-building.

8. Task groups 1 and 2 are working towards developing the structures for the implementation of the rolling plan, while task groups 3 to 5 are working towards the implementation of prioritised, cross-cutting elements under the three strategies of the capacity-building rolling plan.

III. Implementation of the capacity-building rolling plan

Introduction

9. The capacity-building rolling plan¹ identifies the principles, strategic directions, modalities and actions for building and further developing the capacities of individuals and institutions based on the priority needs² established by the IPBES Plenary. The successful implementation of the rolling plan relies on contributions from, and collaboration with, the wide range of institutions already conducting, or interested in conducting, capacity-building activities that relate to the IPBES work programme and the priority capacity-building needs approved by the IPBES Plenary.

10. The capacity-building rolling plan consists of three strategies: 1) learning and engagement; 2) facilitating access to expertise and information; and 3) strengthening national and regional capacities. Activities under strategy 1 focus primarily on supporting implementation of the IPBES work programme itself, and on learning from that implementation. The activities led by the task force, therefore, fall mainly under strategy 1. Activities under strategy 2 will mainly be drawing on the work of partners and other IPBES task forces and expert groups, while activities under strategy 3 will mainly be carried out and facilitated through partnerships and matchmaking activities.

11. The task force is undertaking an incremental approach to building collaboration and engagement with the wide range of institutions involved in capacity-building activities relating directly to the IPBES work programme and the priority capacity-building needs approved by the IPBES Plenary. The approach

¹ Full IPBES capacity-building rolling plan in IPBES/5/INF/3. Executive summary in Annex I to decision IPBES-5/1.

² Annex I to decision IPBES/3/18.

aims to ensure a sustainable, manageable and transparent step-wise process that mobilises resources through in-kind contributions and alignment of activities towards the implementation on the rolling plan. This is done by engaging in strategic dialogues for alignment of activities with organisations that have already signalled their interest in supporting the IPBES capacity-building rolling plan and by inviting other organisations to contribute through an open invitation on IPBES.net and by launching targeted calls in response to those needs viewed most urgent by IPBES subsidiary bodies and expert groups.

12. Activities and other contributions to the implementation of the rolling plan, including those of partners can be found in appendix 4. The capacity-building task force aims to continuously update and make available a comprehensive list of activities on the IPBES website.

13. The following sections A to C present progress in the implementation of the three strategies of the capacity-building rolling plan.

A. Implementing strategy 1: learning and engagement

1. IPBES fellowship programme

14. The first cohort of IPBES fellows, composed of 33 fellows from the regional assessments and the thematic assessment on land-degradation and restoration, will become alumni of the fellowship programme in 2018.

15. The task force is developing an alumni network for IPBES fellows. The aim of that network is that members help identify new fellows and represent a pool of potential experts for new IPBES assessments.

16. The capacity-building task force will conduct a final review of the fellowship programme for the land degradation and restoration assessment and regional assessments, including collecting feedback from a wide range of actors involved in the fellowship programme during or shortly after the sixth session of the IPBES Plenary. The task force will also conduct a smaller mid-term evaluation of the fellowship programme supporting the global assessment to continue improving the IPBES fellowship programme by building upon experiences and lessons learnt. The results of the evaluation(s) will guide the further implementation of the programme. The results will be shared with the Multidisciplinary Expert Panel and Bureau as well as reported on to the seventh session of the IPBES Plenary.

17. As part of its work to strengthen fellows' capacities on the science-policy interface, the fellows training for 2018 will be held in Medellín, Colombia during the sixth session of the IPBES Plenary.

18. Further information on the IPBES fellowship programme can be found in appendix 1.

2. Training workshops

19. The task force planned and facilitated three workshops in 2017 with the support of the management committees of the assessments and the assessments' technical support units. The workshops were designed to further build experts' capacities around identified core needs through hands-on training during the drafting of the second order draft of these assessments and the first drafts of their summaries for policymakers. The following workshops were conducted:

(a) Capacity-development and writing workshop for IPBES experts from Central Europe, Eastern Europe and Central Asia, held from 30 January to 3 February 2017 in Antalya, Turkey. The workshop focused specifically on assessing the state of knowledge on biodiversity and nature's contributions to people and societies in Central Europe, Eastern Europe and Central Asia using group discussions and writing sessions with experts from these regions. In-kind contribution was received from the Ministry of Forestry and Water Affairs in Turkey.

(b) Capacity-development writing workshop for experts of the Africa regional assessment, held from 13 to 17 February 2017 in Golden Gate National Park, South Africa. The workshop was designed to build the assessment experts' capacities around identified core needs through hands-on training, including how to draft the executive summaries of the chapters. In-kind contribution was received from the Norwegian Environment Agency.

(c) Capacity-development workshop to develop summaries for policymakers on the thematic assessment of land degradation and restoration and the three regional assessments (Africa, Americas and Asia Pacific), held from 27 February to 2 March 2017 in Oslo, Norway. The workshop was organized jointly for four assessments, with a view to foster mutual learning while promoting a common approach to

summaries across the assessments. In-kind contribution was received from the Norwegian Environment Agency.

3. Regional dialogue meetings

20. The capacity-building task force in collaboration with the management committees of the regional assessments organised four regional dialogue meetings between IPBES national focal points and experts in the period June to August 2017. The aim of the meetings was *to strengthen government engagement in the production and use of the regional assessments, and to provide insight for assessment experts into how their assessment is perceived and received by Governments*. The meetings were arranged in response to requests from members of the Platform, and implement strategy 1 and 3 of the rolling plan on further enhancing Governments' capacities for engaging in the production and uptake of IPBES assessments.

21. The regional meetings were conducted as the third and main step of a three-step process to stimulate Government involvement and ownership in the production of the four regional assessments. Step one consisted in providing information to Governments delegates on the regional assessments as part of the regional consultations held immediately before the fifth session of the IPBES Plenary. Step two included a series of webinars during the review period focusing on familiarisation on the content of the chapters and the summary for policy makers, described below. Finally, step three consisted of four regional dialogue meetings in Africa, Americas, Asia Pacific and Europe and Central Asia.

22. All four regional dialogue meetings were chaired by IPBES Bureau members from the respective regions, followed the same agenda and applied a similar structure and methodology. The agenda comprised four substantial items: introduction to the regional assessment, learning from the second external review, preparing for the use of the regional assessment, and preparing for the approval process of the summary for policymakers at IPBES-6.

23. The four dialogue meetings were attended by a total of 76 national focal points, and by the co-chairs and some of the assessment authors, members of the Bureau and Multidisciplinary Expert Panel from the region, members of the task force on capacity-building and of the secretariat.

24. An overview of locations, participants and contributing organizations to the four regional dialogue meetings can be found in Appendix 3, table 1.

25. Significant financial and in-kind contributions³ were raised for all meetings, including free venue for the meetings in Asia Pacific and Europe and Central Asia as well as translation services for the meetings in Africa and the Americas. Organizing the meetings back-to-back with the assessments' third author meetings helped reduce costs.

26. The evaluation surveys conducted after the meetings show that participants were very satisfied, giving an overall rating of the meetings of 8.7 on a 10-point scale with 10 being the top-score. Furthermore, the importance and success of the regional dialogue meetings were highlighted by the 10th Multidisciplinary Expert Panel and Bureau meeting.

27. During the meeting, participants stressed the importance of dialogue and collaboration across the science-policy interface between IPBES experts and national focal points, noting that this strengthens knowledge and engagement, lowers the threshold to contribute to review processes, and increases sustained involvement and ownership of IPBES processes. Language was flagged as an obstacle hampering the ability to engage in the IPBES process, especially in the Africa region.

28. Participants recommended organizing future dialogue meetings during or ahead of external review periods to ensure maximum benefits for both IPBES experts and national focal points.

29. A report of the meetings can be found in appendix 3.

30. During the regional dialogue meetings, the countries who had submitted comments under the external review were invited to present their experiences from the review *process* (e.g. how many were involved in the process, who was involved, timeframe, lessons learnt, etc.). The approaches applied in the review process varied considerably between countries and provided a good basis for discussions, peer learning and useful insights during the meetings. A summary of these processes can be found in appendix 3.

³ See contributions to the implementation of the rolling plan in appendix 4.

4. Webinars

31. The task force on capacity-building is hosting the IPBES webinar series to support implementation of all three strategies of the capacity-building rolling plan. The objective of the webinars is to support the IPBES work programme by increasing understanding of key concepts, processes and outputs.

32. As a follow-up on the discussions with Governments in the regional meetings in Bonn prior to the fifth session of the IPBES Plenary in March 2017, it was decided to organize one webinar explaining the processes around the second order draft external review period, and to also organize a series of assessment-specific webinars for the regional assessments and the land degradation and restoration assessment. The webinars were primarily intended for national focal points, Government officials and stakeholders already engaged in, or considering participation in the review process. The process-orientated webinar was recorded by the IPBES Executive Secretary and made available two weeks before the external review period started.

33. Once the assessment reports went out for external review on 1 May 2017, the capacity-building technical support unit worked together with the secretariat, the assessment technical support units and their co-chairs to develop assessment-specific webinars which were presented by the co-chairs and made available online during the review phase. The objective of the assessment-specific webinars was to explain the scope of the respective assessments, to describe what a summary for policymakers (including its key messages) entails, and how it will be considered by the Plenary. The webinars for the Africa, Asia-Pacific and Europe and Central Asia regional assessments and for the land degradation and restoration assessment were pre-recorded and made available online in the week of 22 May 2017. The webinar for the Americas assessment was made available online as of 16 June 2017. For the Americas' assessment, the webinar was recorded in English and Spanish and for the African assessment in both English and French.

B. Implementing strategy 2: Facilitating access to expertise and information

Collaborative initiatives with contributing organisations forming pilot communities of practice

34. Building on lessons learned and advice received, the task force is focusing its initial collaboration with partners (mentioned above in section II. Fifth meeting of the task force) on three priority areas with transversal activities that cut across the strategies of the capacity-building rolling plan (task groups 3-5). In addition to supporting the uptake of assessments, developing guidance on national assessments and science-policy platforms and supporting the increased use and development of IPBES learning materials, these initiatives will serve as pilots to test and refine the general approach to organise the interface between IPBES and partner organisations. It is envisioned that the task groups will develop into three or more 'communities of practice'.

35. As part of its efforts to mobilise resources and work with partners in a transparent manner, the task force is issuing a call in 2018 to support the work on the three priority areas and stimulate the process of developing communities of practice. The call is inviting contributions from organisations that:

- (a) wish to support the use and uptake of IPBES' assessments by aligning planned events to promote the use and uptake of approved assessment reports or pledging funds to support such activities;
- (b) have taken part in processes on developing national or (sub)regional science-policy platforms and would like to share their examples and existing guidance document(s); or
- (c) have developed learning materials on IPBES assessments or guides, or are planning to do so in the near future, and would like to share these.

C. Implementing strategy 3: Strengthening national and regional capacities

Developing guidance on national and (sub) regional science-policy platforms and national and sub-regional assessments

36. Partners in collaboration with the task force (task group 4) are working on developing guidance on national and (sub) regional science-policy interface platforms; national and sub-regional assessments; and national capacity self-assessment. The guidance can support countries and (sub) regions in establishing their own science-policy platforms and networks, and/or in carrying out national and sub-regional assessments. The task group is reviewing existing relevant guidance and will be reaching out in 2018, through a targeted call, to organisations that have taken part in the process of developing national or (sub) regional science-policy platforms for sharing their examples and existing guidance document(s).

IV. IPBES Capacity-building Forum

37. The IPBES Capacity-building Forum is a key vehicle for increasing engagement and facilitating cooperation with other institutions that fund, undertake or otherwise contribute to relevant capacity-building activities. Experiences and lessons learnt from the two meetings organised to date have fed into the development of the capacity-building rolling plan.

38. The Bureau, advised by the task force, recommends holding a third meeting of the IPBES capacity-building Forum in late 2018, back to back with the annual meeting of the capacity-building task force.

39. It is envisioned that the forum will be a venue to advance cooperation with representatives of current and new involved capacity-building partners. The task force will map and engage in bilateral dialogues with potential invitees to gauge their interest. The results from this exercise will inform the planning of the meeting.

40. A concept note for the meeting is included in appendix 2.

V. Further implementation

41. Information on the activities of the task force on capacity-building is set out in the report of the Executive Secretary (IPBES 6/2).

42. During the 2018-2019 intersessional period, IPBES will continue its work on implementing the capacity-building rolling plan, focussing on:

(a) the continuation of the fellowship programme as described above, including the selection of new fellows for any newly launched assessment (pending Plenary approval), as part of the implementation of strategy 1;

(b) the continuation and expansion of the work of the task groups to further increase engagement of partner organisations in capacity-building activities supporting IPBES objectives as described above, including specific calls for contributions and the facilitation of a third capacity-building forum. This work supports the implementation of strategy 1-3;

(c) the continuation of the work on strengthening national capacities for engagement and use of the work of IPBES, including arranging regional dialogue meetings on the global assessment and/or the second work programme. These activities support the implementation of strategy 3;

(d) the further development of a dedicated capacity-building web portal on the IPBES website, to reflect all ongoing activities and contributions, and to facilitate further engagement in IPBES work on capacity-building, facilitating the implementation of all three strategies; and

(e) the continuation of capacity-building activities in support of experts undertaking IPBES deliverables, in particular in the case of any newly launched assessment. This action support the implementation of strategy 1.

Appendix 1 - Report on the IPBES fellowship programme

1. In decision IPBES 4/1 the Plenary of the Intergovernmental Science-Policy Platform on Biodiversity and Ecosystem Services requested the task force on capacity-building to continue the piloting of the draft programme on fellowship, exchange and training, to report on its progress and to make recommendations for its further development to the Plenary at its fifth session.
2. The IPBES fellowship programme was initiated in 2015 as an unpaid fellowship scheme. The objectives of the programme is to further enhance skills and expertise of outstanding early-career individuals, both scientists and policy-makers, in production and use of environmental assessments for the conservation and sustainable use of biodiversity, long-term human well-being and sustainable development. Entry into the programme is highly competitive, and only 5 % of the applicants to the calls for fellows issued so far have been invited to join the programme. Fellows are selected by the Multidisciplinary Expert Panel with a view to achieve disciplinary, geographic and gender balance, following the same procedures as for other authors contributing to IPBES assessments. Selected fellows participate as part of a chapter team of an assessment and are expected to commit up to 15 per cent of their time in the assessment period. The time commitment includes author meetings, training, writing, and revising their specific chapter contributions in response to comments from other authors and the peer review.
3. The fellowship programme currently comprises 49 fellows from 37 countries. Key statistics for the fellows are summarised in table 1 below.

Table 1
Summary of key statistics for IPBES fellows

	<i>Number of fellows</i>		<i>Mean age</i>	<i>Level of education</i>	
	Male	Female		PhD	Master's degree
Total	22	27	33 years	43	6
LDR	3	4			
Africa	2	5			
Americas	2	4			
Asia-Pacific	2	5			
Europe and Central-Asia	3	3			
Global assessment	10	6			

4. The feedback on the programme by fellows has been very positive across the assessments. The latest evaluation of the programme (2017), which included survey responses from 37 fellows, rated the fellowship programme 9 on a 10-point scale, with 10 being the top-score. The fellows highlighted peer learning, engagement in an interdisciplinary network, increased understanding of IPBES and its assessments processes, and meaningful involvement in large-scale assessments as particularly valuable outcomes of the programme. The majority of fellows also reported great satisfaction with the associated mentorship programme, emphasising good communication and understanding with their mentors, and describing the mentorship programme as conducive to their professional development.
5. In addition to participating in author and chapter meetings related to the production of their respective assessments, fellows have participated in annual training workshops and 'induction days' ahead of the first author meetings organised by the task force and technical support unit on capacity-building. These training activities aim to a) build relations for peer learning and collaboration, and b) further enhance expertise on the science-policy interface on biodiversity and ecosystem services, in particular on the production and use of IPBES deliverables.
6. The annual training workshop for fellows in the 2017-2018 intersessional period will be organised in parallel with the sixth session of the Plenary. The workshop aims to further enhance fellows' knowledge of the biodiversity and ecosystem services science-policy interface through providing fellows the

opportunity to experience the formal process underlying IPBES decisions, and witness and learn from the dialogue between governments and experts prior to the Plenary's approval of assessments. The training will be supported financially by Future Earth and the Norwegian Environment Agency.

7. Seven fellows also participated in the four regional dialogue meetings between national focal points and IPBES experts organised in June-August 2017. In addition to participating in the meetings to learn about the science-policy interface activities of IPBES, the fellows assisted with various tasks such as translation, note taking and logistical arrangements.

8. Following the completion of the four regional assessments and the thematic assessment of land degradation and restoration, 33 of the fellows will become alumni of the fellowship programme. The task force on capacity-building and its technical support unit will develop an alumni network.

9. The capacity-building task force will conduct a final review of the fellowship programme for the land degradation and restoration and regional assessment, including collecting feedback from a wide range of actors involved in the fellowship programme during or shortly after IPBES-6. The task force will also conduct a smaller mid-term evaluation of the fellowship programme supporting the global assessment, to continue improving the IPBES fellowship programme by building upon experiences and lessons learnt. The results of the evaluation(s) will be shared with the Multidisciplinary Expert Panel and Bureau and guide the further implementation of the programme.

10. All IPBES fellows are listed in table 2 below.

Table 2

List of IPBES fellows

<i>Assessment</i>	<i>Name</i>	<i>Affiliation</i>	<i>Nominating Government/Organisation</i>
Africa	Joyce Ojino	Ministry of Environment, Water and Natural Resources, Public Complaints Committee on the Environment	International Institute of Industrial Environmental Economics (IIIEE)
	Cosmas Dayak	Bayreuth Center for Ecology and Environmental Research (BayCEER)	Leibniz University of Hannover
	Kombat Lambini		
	Nadia Sitas	Council for Scientific and Industrial Research	Council for Scientific and Industrial Research
	Gregory Mero Dowo	University of Zimbabwe	Tropical Resource Ecology Programme, University of Zimbabwe
	Dimpho Malebogo Matlhola	Okavango Research Institute, University of Botswana	Okavango Research Institute, University of Botswana
	Houda Ghazi	Faculty of Sciences Semlalia, Caddi Ayyad University	Faculty of Sciences Semlalia, Caddi Ayyad University
	Martha Mphatso Kalemba	Environmental Affairs Department	Environmental Affairs Department
Americas	Laura Thompson	U.S. Geological Survey, National Climate Change and Wildlife Science Center	National Climate Change and Wildlife Science Center
	Rodolfo Jaffe Ribbi	Vale Institute of Technology - Sustainable Development	University of Sao Paulo
	Juliana Sampaio Farinaci	University of Campinas	Brazil
	María Paula Barral	CONICET	National Institute of Agricultural Technology
	Julio Diaz Jose	Instituto Tecnológico Superior De Zongolica	Instituto Tecnológico Superior De Zongolica
	Mireia Valle	Universidad Laica Eloy Alfaro de Manabí	Universidad Laica Eloy Alfaro de Manabí

<i>Assessment</i>	<i>Name</i>	<i>Affiliation</i>	<i>Nominating Government/Organisation</i>
Asia Pacific	Yasuo Takahashi	Institute for Global Environmental Strategies (IGES)	Institute for Global Environmental Strategies (IGES)
	Felicia Permata Sari Lasmana	Daemeter Consulting	Daemeter Consulting
	Aidin Niamir	Senckenberg Biodiversity and Climate Research Center	Senckenberg Biodiversity and Climate Research Center
	Amani Al Assaf	University of Jordan	University of Jordan
	Sonali Ghosh	Wildlife Institute of India	India
	Catherine Mitra Febria Oabel	University of Canterbury	University of Canterbury
	Yuanyuan Zhang	Minzu University of China	China
Europe and Central Asia	Zuzana Harmackova	Global Change Research Centre AS CR	Global Change Research Centre AS CR
	Fanny Boeraeve	Gembloux Agro Bio-Tech (University of Liege)	Gembloux Agro Bio-Tech (University of Liege)
	Rahat Sabyrbekov	Economics of Land Degradation	American University of Central Asia
	Carlos António Bastos De Morais Guerra	German Centre for Integrative Biodiversity Research (iDiv)	Instituto de Ciências Agrárias e Ambientais Mediterrânicas
Land degradation and restoration	Luca Coscieme	Trinity College Dublin	Trinity College Dublin
	Elena Osipova	IUCN, World Heritage Programme	IUCN
	Sugeng Budiharta	Indonesian Institute of Sciences	Indonesian Institute of Sciences
	Maylis Desrousseaux	Lyon 3 University	Environmental law institute - Lyon 3 University
	Bernard Nuoleyeng Baatuuwie	University for Development Studies	University for Development Studies
	Marina Monteiro	Universidade Federal de Goiás	Universidade Federal de Goiás
	Vanessa Marie Adams	University of Queensland, School of Biological Sciences	University of Queensland, School of Biological Sciences
	Ruishan Chen	Guoqing Shi	Hohai University
	Matthew R. Ross	Duke University	Duke University
	Global	Basher Md Zeenatul	Michigan State University
Palomo Ignacio		Basque Centre for Climate Change	Basque Centre for Climate Change
Julia Abigail Lynch		U.S. Geological Survey, National Climate Change and Wildlife Science Center	United States of America
Patricio Pliscoff		Universidad Catolica de Chile	Chile
Michelle Mei Ling Lim		Griffith University	International Social Science Council
Selomane Odirilwe		Council for Scientific and Industrial Research (CSIR)	Council for Scientific and Industrial Research (CSIR)
Assem Mohamed		Ministry of Agriculture and Land Reclamation (MALR), Agricultural Research Center (ARC), Central Laboratory for Agricultural Climate (CLAC).	Egypt
Anna Sidorovich		The Scientific and Practical Centre for Bioresources of the National Academy of Sciences of Belarus	The Scientific and Practical Centre for Bioresources of the National Academy of Sciences of Belarus

<i>Assessment</i>	<i>Name</i>	<i>Affiliation</i>	<i>Nominating Government/Organisation</i>
	Álvaro Fernández- Llamazares Onrubia	University of Helsinki	University of Helsinki
	Aibek Samakov	Universität Tübingen	Universität Tübingen
	Uttam Babu Shrestha	University of Southern Queensland	Global Young Academy
	Rashad Salimov	Institute of Botany of ANAS	Institute of Botany of ANAS
	Tuyeni Heita Mwampamba	Institute of Ecosystems & Sustainability Research, National Autonomous University of Mexico	United Republic of Tanzania
	Lenke Balint	The Royal Society for the Protection of Birds (RSPB)	RSPB/Birdlife International
	Ivis Julieta Chan	Plantlife International	Plantlife International
	Pedro Jaureguiberry	National University of Cordoba	Inter-American Institute For Global Change Research

Appendix 2 – Concept note for the third meeting of the Capacity-building Forum

Engaging with capacity-building under IPBES

11. The work on capacity-building under IPBES is founded on the IPBES Capacity-building Rolling Plan, which establishes the principles, strategic directions and modalities for addressing the individual and institutional capacity-building needs identified by the IPBES Plenary. In order to effectively address these priority needs, the IPBES task force on capacity-building engage and collaborate with institutions undertaking relevant activities to align efforts and mobilise resources towards the implementation of the rolling plan. Contributions towards the implementation of the capacity-building rolling plan are recognised in the annex of the rolling plan, and reported to the IPBES Plenary.

12. The IPBES Capacity-building Forum is a key vehicle for increasing engagement and facilitating collaboration among partners for the implementation and further development of the rolling plan, and serves as an arena for cooperation between IPBES and other institutions that fund, undertake or otherwise contribute to relevant capacity-building activities. **Work under the forum aims to advance the joint agendas of partners and facilitate longer term strategic alignment of relevant ongoing programmes.** By providing an arena for dialogue and cross fertilisation of ideas, the forum endeavours to mobilise resources for the implementation of the rolling plan and add value to the work of partners through promoting new collaborations, stimulating cross-institutional learning and creating synergies between existing capacity-building initiatives.

The third meeting of the Capacity-building Forum

13. The third meeting of the Capacity-building Forum will build on experiences from the two meetings arranged to date and the fifth task force meeting, which focused on collaboration with partners in support of the rolling plan. It is envisioned that the meeting will be held in conjunction with the sixth task force meeting. Consideration will be given to organize the task force and the forum as a joint meeting. The meeting will build on existing partnerships by inviting new institutions to contribute to the implementation of the rolling plan and extending collaboration with current partners. Invited institutions will play an active role prior to and during the forum meeting by:

- (a) Identifying how they can contribute to the implementation of the rolling plan, either through building upon the initiatives already being undertaken or starting new initiatives;
- (b) Engaging in dialogues with the capacity-building task force and institutions present at the meeting to explore opportunities for alignment and collaboration; and
- (c) Jointly developing concrete activities supporting the implementation of the rolling plan.

14. It is suggested to organise a two- to three-day forum in December 2018, in conjunction with the sixth meeting of the capacity-building task force. Venue has not been decided.

15. It is suggested to invite approximately 30 participants from three groups:

- (a) Institutions already supporting the implementation of the capacity-building rolling plan;
- (b) Institutions well-placed and interested in supporting the implementation of the rolling plan; and
- (c) Capacity-building task force members.

16. The capacity-building task force will engage in bilateral dialogues with potential participants prior to the meeting to gauge their interest and inform the planning of the meeting. Recognising the importance of engaging with partners well in advance of the meeting, the task force recommends beginning to identify and engage potential invitees as soon as possible after the sixth session of the IPBES Plenary

17. The estimated budget for the meeting amounts to \$30,000, based on experiences from earlier meetings with potential partners.

Appendix 3 – Regional dialogue meetings

Summary report: Regional dialogue meetings for the IPBES regional assessments on biodiversity and ecosystem services

Executive Summary

- **Four regional dialogue meetings between national focal points (NFPs) and IPBES experts for the IPBES Regional Assessments on Biodiversity and Ecosystem Services** were held in June-August 2017 with the aim to *strengthen government engagement in the production and use of the regional assessments, and to provide insight for assessment experts into how their assessment are perceived and received by Governments.*
- **Governments' involvement** in the production and use of IPBES deliverables is key to increase credibility, quality and legitimacy of assessments, ensure policy relevance, and stimulate ownership and uptake of assessment findings.
- The regional dialogue meetings are part of the work of the IPBES task force on capacity-building on further **enhancing national capacities for engaging in the production and uptake of IPBES assessments**, and have been **developed in response to needs reported by member States and IPBES experts.**
- Meeting participants, including IPBES experts, MEP/Bureau members and NFPs reported that they were very satisfied with the organisation and substantive discussions during the meeting. The evaluation survey shows that **all key indicators for evaluating the success of the meetings received an average rating above 8 on a rating scale from 1-10, with 10 being the top score.**
- Participants stressed the importance of dialogue and collaboration across the science-policy interface between IPBES experts and NFPs, noting that this strengthens knowledge and engagement, lowers threshold to contribute to review processes at regional and national level, and increases **sustained involvement and ownership of IPBES processes.**
- The regional dialogue meetings provided good platforms for **peer learning.** A large proportion of the NFPs suggested that more frequent meetings and interactions would lead to **more functional NFP networks** that are better equipped to share best practices and experiences to **strengthen national capacities for engaging in the production and use of IPBES deliverables.**
- **Further enhancing national capacities** for engaging in the production of IPBES deliverables and promoting their use and uptake into local, national and regional policy were seen as key for delivering the envisioned outcomes of IPBES.

1. Context and objectives

The four regional assessments (Africa, Americas, Asia Pacific and Europe and Central Asia) on biodiversity and ecosystem services are currently in their final year of production, and will be presented to the 6th session of the Intergovernmental Platform on Biodiversity and Ecosystem Services (IPBES) Plenary in March 2018. Following the external reviews (May-July) of the second order drafts of the assessment reports and the first order drafts of the summaries for policymakers (SPM), regional dialogue meetings were held in all regions with the aim *to strengthen government engagement in the production and use of the regional assessments, and to provide insight for assessment experts into how their assessment are perceived and received by Governments.*

The meetings were conducted as the third and main step of a three-step process to stimulate solid Government involvement and ownership in the production of the four regional assessments, as visualised below in figure 1.

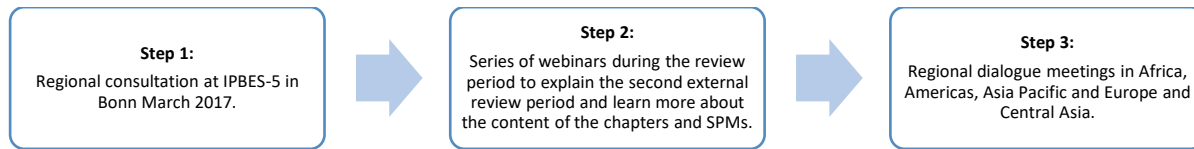


Figure 1: Three-step process to strengthen Governments' engagement in the production of IPBES regional assessments

The regional dialogue meetings were organised jointly by the IPBES capacity-building task force and the management committees of the regional assessments, with the support of partner organisations. The meetings were arranged in response to requests from member States, and are part of the work of the capacity-building task force under IPBES Capacity-building Rolling Plan to further enhance Governments' capacities for engaging in the production and uptake of the regional assessments. Such engagement is essential for ensuring the policy relevance and impacts of the assessments. Supporting and facilitating this engagement is a key mandate of IPBES, and one that is of crucial importance for achieving the mission of strengthening the science-policy interface for biodiversity and ecosystem services.

Fruitful engagement across the science-policy interface is dependent on effective dialogue between national representatives to IPBES and the experts producing the assessments. In recognition of this, the meetings were designed to further enhance capacities for both assessment experts and national focal points (NFPs) through open and informal discussions. The specific objectives for the meetings were:

For Governments:

- i. To better understand the content of the regional assessment
- ii. To prepare for the approval process at IPBES-6 (March 2018)
- iii. To prepare for the use of the regional assessment after IPBES-6

For assessment experts:

- i. To understand how assessments are perceived and received by Governments
- ii. To prepare for IPBES-6

The information summarised in the report below provides an overview of the structure and evaluation of the meeting and discussions related to the work on capacity-building under IPBES, hereunder identification of capacity-building needs related to national engagement in the production and use of the regional assessments.

2. Organization and participants

The four dialogue meetings were organised in the period June-August 2017⁴, and were attended by a total of 76 NFPs⁵, assessment co-chairs and a selected number of assessment authors. In addition to experts directly involved in the production of the assessments, members of the IPBES Bureau and Multidisciplinary Expert Panel (MEP), the IPBES task force on capacity-building and the secretariat participated in the meetings. The secretariat was supported by seven IPBES fellows participating in the meetings to learn about the science-policy interface activities of IPBES. The technical support units (TSUs) of the regional assessments were key contributors to the organisation and implementation of the meetings, in dialogue with the TSU on capacity-building.

Significant financial and in-kind contributions were leveraged for all meetings, including translation services for the meetings in Africa and the Americas, from a number organizations and institutions. All of these contributions are recognized as contributions to the implementation of the capacity-building rolling plan, and will be reported to IPBES-6. A brief overview of the four meetings are found in table 1 below. Meeting agendas and lists of participants per region can be found online on this link.

Table 1: Overview of regional dialogue meetings

Region	Place/Date	NFPs	IPBES Experts ⁶	IPBES Secretariat	Local hosts/ contributing organisations
Europe and Central Asia	Vácrátót, Hungary, 12-14 June 2017 ⁷	19 ⁸	7	4	The Institute of Ecology and Botany of the Hungarian Centre for Ecological Research (MTA-ÖK), French Foundation of Research on Biodiversity (FRB) and NeFo
Asia Pacific	Tokyo, Japan, 20-21 July 2017 ⁹	21 ¹⁰	14	4	The Japan Agency for Marine-Earth Science and Technology (JAMSTEC), Ministry of Environment Japan (MoEJ), Asia-Pacific Network for Global Change Research (APN)
Africa	Addis Ababa, Ethiopia, 3-4 August 2017	19 ¹¹	12	4	The Ethiopian Biodiversity Institute (EBI), Norwegian Environment Agency ¹²
Americas	Cartagena, Colombia, 3-4 August 2017	17 ¹³	14	3	Norwegian Environment Agency ¹⁴
Total		76	47	15	

⁴ All meetings were originally planned during the second external review period in May 2017. However, with the exception of the regional dialogue meeting for the Europe and Central Asia Assessment that was organised as part of PESC-4, all meetings were rescheduled and held back-to-back with the assessments third author meetings to reduce costs and workload for experts.

⁵ For countries without a designated IPBES national focal point, the invitation to the meeting was addressed to the CBD NFP.

⁶The IBES experts column includes members of the IPBES Bureau and MEP.

⁷ The regional dialogue meeting for the ECA assessment was organized in conjunction with the fourth IPBES Pan-European Stakeholder Consultation (PESC-4). The total number of participants at PESC-4 was 61.

⁸ In the Europe and Central Asia region, there are 39 member nations.

⁹ The regional dialogue meeting for the Asia Pacific assessment was organised back to back with the workshop "Reinforcing capacities of governmental officials in the Asia- Pacific region" hosted by the Ministry of Environment in Japan and UNESCO.

¹⁰ In the Asia-Pacific region, there are 26 member nations.

¹¹ In the Africa region, there are 37 member nations.

¹² The Norwegian Environment Agency covered the costs of simultaneous interpretation.

¹³ In the Americas region, there are 25 member nations.

¹⁴ The Norwegian Environment Agency covered the costs of simultaneous interpretation.

3. Agenda items

All four regional dialogue meetings were chaired by IPBES Bureau members from the respective regions, followed the same agenda and applied a similar structure and methodology. The meeting comprised four substantial agenda items: introduction to the regional assessment, learning from the second external review, preparing for the use and uptake of the regional assessment, and preparing for the approval process of the summary for policymakers at IPBES-6.

Introduction to the regional assessment

The assessment co-chairs presented the general scope of the IPBES regional assessments on biodiversity and ecosystem services; the specific scope for the respective regions; the draft Summary for Policymakers (SPM), including the structure of the SPM; the assessment of confidence; key messages of the draft SPM; and next steps for the assessment in question. Coordinating Lead Author (CLA) or Lead Author (LA) from each of the chapters presented the key findings of the chapters. These presentations were followed by informal discussions on how the draft SPM could be made more policy-relevant.

The following selected points on how the assessment report and the SPM could be made more policy-relevant were raised:

- NFPs may play a vital role in raising awareness and increasing engagement, thereby enabling uptake of the findings of the assessments;
- The establishment of national, sub-regional and regional networks, comprising IPBES NFPs and other relevant stakeholders, could facilitate exchange and strengthen common advocacy efforts;
- The SPMs should be closely connected to the livelihoods and climate change agenda and aligned with other mechanisms such as the Sustainable Development Goals (SDGs) to increase their relevance;
- The threat to biodiversity and ecosystem services should be clearly communicated through compelling evidence-based key messages and statistics for policy makers to make informed decisions and follow up with specific actions in national budgets;
- Policy options, including the need for capacity-building, financial resources, technology transfer and innovation in sustainable use of resources, should be presented clearly;
- Existing policy measures and lessons learnt from these, should be identified in the assessments to inform future policy actions; and
- Progress indicators should be developed in order to measure implementation of the assessment and related policy measures.

Learning from the second external review

The comments and experiences from the external review period were presented. Countries who had provided comments were invited to present their experiences from the review process (*e.g. who, or how many were involved in the process, timeframe, lessons learnt etc.*). The approaches applied in the review process varied considerably between countries and provided good discussions, peer learning and useful insights. Examples of processes established by national focal points to submit comments to the external review process for further peer-learning can be found in annex 1.

In the ECA regional dialogue meeting, which was organised in conjunction with the PESC-4 meeting during the review period, participants who had initiated the national review process shared their approach to arranging a national review process.

Preparing for the use and uptake of the regional assessment

IPBES' communication and outreach plan for the regional assessments as well as the lessons learnt from the pollination assessment were presented. The presentations were followed by discussion on approaches for enabling the use and uptake of the regional assessments.

The following selected points on approaches for enabling the use and uptake of the regional assessments were raised:

- Collaboration with regional and sub-regional institutions may strengthen policy implementation of the regional assessments and the SPM, both through establishing alliances for joint advocacy efforts and by making use of existing platforms and meetings to promote IPBES deliverables;
- The establishment of functional networks of NFPs, including the provision of technical and financial support for capacity-building, may stimulate peer learning, facilitate adoption of the regional assessments and drive policy implementation at the regional and national levels;
- Customization of the SPM, including translation to local languages, alignment to existing strategies and national action plans and definition of country specific advocacy, is vital to ensure uptake of assessment findings at the national level;
- The use of indigenous and local knowledge and increased focus on bottom-up approaches is necessary to ensure ownership, engagement and policy implementation at sub-national level;
- Efforts to promote uptake of the assessments at the national level should involve government actors beyond ministries in charge of environment to ensure buy-in and national budget commitment; and
- Effective media strategies, including communication of short and compelling policy-oriented messages through dissemination briefs, TV broadcasting, newspapers and social media, are needed to increase public awareness and engagement.

Preparing for the approval process of the SPM at IPBES-6

The next steps of the regional assessments and the organisation of the approval process were presented, and NFPs and assessment experts engaged in dialogue with questions and answers to plan and prepare for the upcoming process.

4. Evaluation

Meeting participants were asked to evaluate the meetings and identify national capacity-building needs related to the regional assessments. Answers from the survey are used to a) inform design, planning and implementation of potential future dialogue meetings; and b) develop activities under the capacity-building rolling plan aimed at further enhancing national capacities for engaging with the production and uptake of the regional assessments.

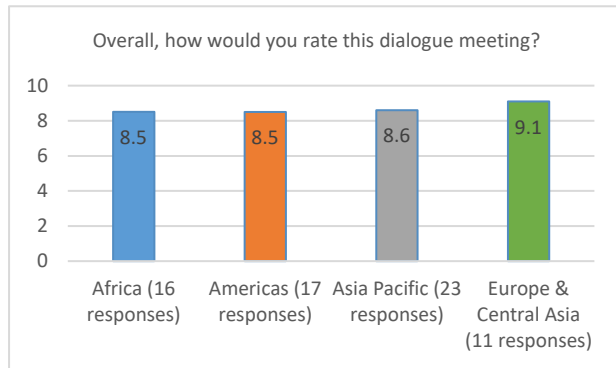
A summary analysis of the questionnaire responses and the rating on different aspects of the meeting¹⁵ is provided below.

Overall feedback on the regional dialogue meetings

Participants reported that they were well satisfied with the meeting, giving an overall rating of 8.7 on a 10-point scale.

¹⁵ The rating scale applied in all graphs goes from 1-10, with 10 being the top score.

The provision of simultaneous translation at the regional dialogue meetings in the Africa and the Americas region was particularly highlighted as a key factor for ensuring successful dialogues, and it was noted that future meetings in these regions would benefit greatly by provision of the same services. Relatedly, several



participants from Africa reported that lack of access to documents in French resulted in more time spent gaining initial understanding of the assessment. French-speaking participants further pointed out that they have a disadvantage since they are unable to access the same information as English-speaking participants. Suggestions to address this included translating the supporting documents into French, sharing the translated presentations in advance, and producing short summaries and key messages in French.

Figure 2: Overall rating of the regional dialogue meetings

Participants across all regions reported that the meeting was a great opportunity for dialogue across the science-policy interface between and assessment experts and government representatives as illustrated in figure 3. Government representatives from the ECA region commented that it was very useful to have the dialogue meeting during the external review as the discussions with IPBES experts and other NFPs enabled them to give more valuable input during the review. This was also reflected in comments from participants from all other regions, who would have preferred that the regional dialogue meetings be held in advance of or early in the review process to enable government representatives to apply the learning from the meeting when commenting on the chapters and the SPM.

Participants across all regions reported that the meeting

Emphasising the importance of exchange and dialogue, participants reported that the meeting provided an important platform for learning from peers, allowing for exchange of experiences on the review process among countries and experts. Several participants suggested that the meetings could be scaled up to include more NFPs and government representatives, and that key actors should be given even more time to report on their experiences and their approaches on the review process to increase mutual learning. It was also suggested that the dialogue could include more experts and other relevant stakeholders from countries where best-practice examples are available.

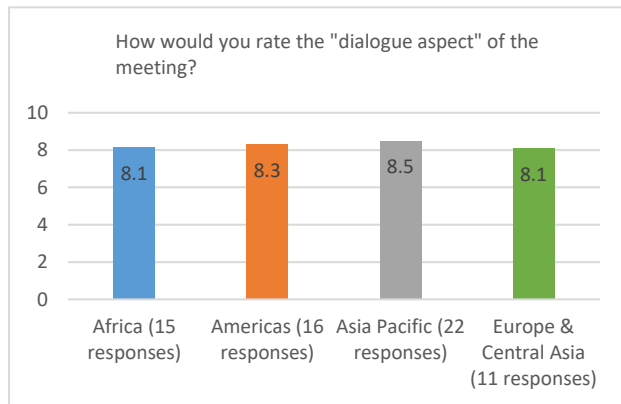


Figure 3: Rating of the "dialogue" aspect of the meeting

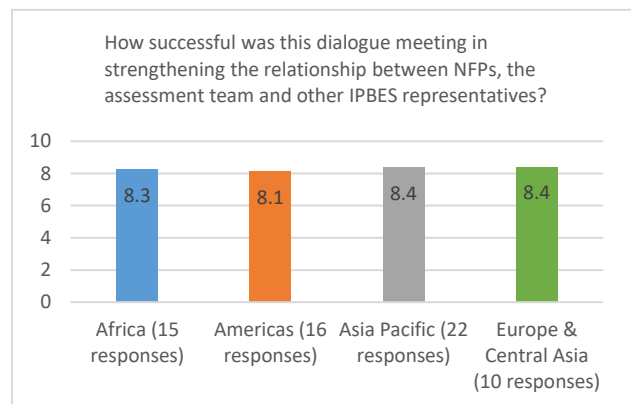


Figure 4: The relationship among the NFPs, the assessment team and other IPBES representatives

Participants noted that the dialogue improved relationship, hereunder, understanding of the roles and expectations of the NFPs as well as the limitations faced by assessment experts, reflected in figure 4.

It was recommended that additional science-policy dialogues aimed at strengthening regional networks and further enhancing capacities of NFPs to engage in production and uptake of IPBES products be included as a key stream of work under the capacity-building rolling plan. Specific activities included organising another set of dialogue meetings ahead of IPBES-6 to discuss the regional assessments and a webinar before the assessment report is finalised. Participants suggested that more frequent meetings would lead to more functional NFP networks that are better equipped to share best practices and experiences. It was further suggested that the specific capacity-building needs of the NFPs be mapped, and that efforts should be undertaken to support networks amongst focal points to facilitate regional collaboration ahead of IPBES – 6.

Introduction to the regional assessment

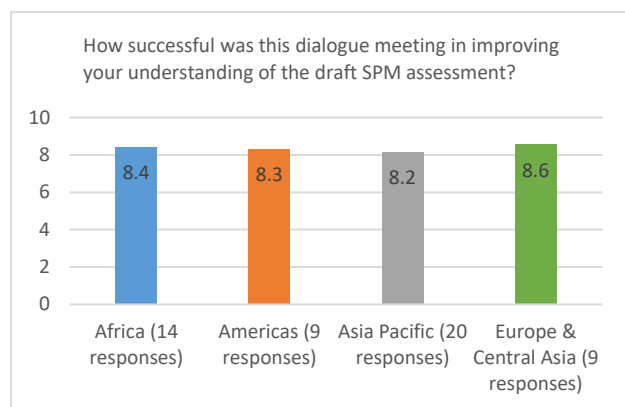


Figure 5: Understanding of the draft SPM assessment (NFPs)

As reflected in figure 5, participants reported that the meeting improved their understanding of the regional assessment on many levels, including on specific findings and policy recommendations, overlaps and synergies between chapters, best practices and experiences on facilitating external review at country level (including stakeholder engagement processes), and the process ahead.

Learning from the second external review

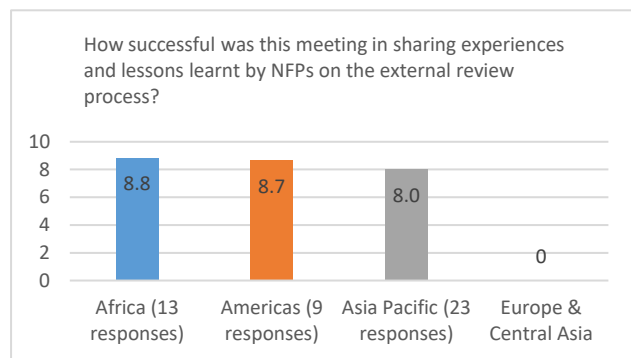
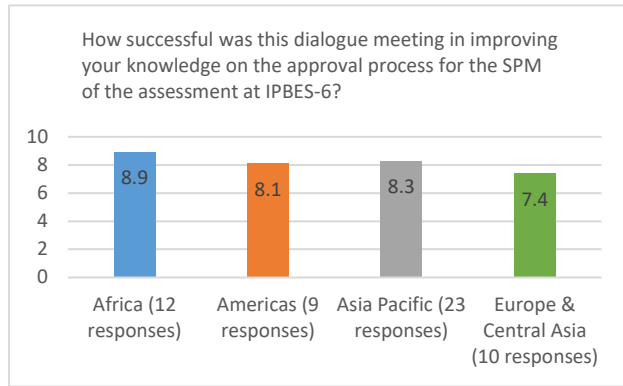


Figure 6: Sharing experiences and lessons learnt by NFPs on the external review process (government representative)

As demonstrated in figure 6, participants expressed great appreciation of the presentations from the NFPs about their experiences of involvement in the second order draft review process¹⁶. The related discussions on challenges and good practices in the review process and possible use of the assessment results in national policies were also highlighted as particularly useful.

¹⁶ NFPs, who had provided comments during the external review period, were invited to present their experiences from the review process.

Preparing for the approval process of the SPM at IPBES-6



The average score for the improvement of knowledge on the approval process for the SPM of the assessment at IPBES-6 was 8.2, indicating that the information presented in this session was useful and that it will be helpful in order to plan and prepare for the upcoming process.

Figure 7: Improvement of knowledge on the approval process for the SPM of the assessment at IPBES-6

Preparing for the use and uptake of the regional assessment

Participants were asked to provide feedback on the main challenges related to the uptake and use of the regional assessments in their respective countries, and the capacity building needed to address these challenges. The feedback from the participants will feed into the stream of work under the capacity-building rolling plan focused on further enhancing national and regional capacities for engaging in the production and use of the regional assessments (see table 2).

Table 2: Challenges and capacity building needs/activities related to use and uptake of the regional assessments – Summary of feedback from NFPs

Main challenges identified related to use and uptake of the regional assessments	Capacity-building needs/activities to address the identified challenges
<ul style="list-style-type: none"> • Too general messages with weak supporting evidence • Too diverse issues making it difficult to extract the relevant information/key messages at country level. • Key messages are not available in local languages 	<ul style="list-style-type: none"> • Develop clear and hard-hitting key messages on loss of biodiversity (to generate same effect as the message on climate change) • Translate key messages to different languages (in addition to the 6 UN languages)
<ul style="list-style-type: none"> • Difficult to demonstrate the relevance of key messages and the importance of the assessment at national and sub-national level • Lack of capacity to adapt/customise policy options at the country level (adaptation) • Lack of capacity (human and financial) for implementation • Challenges relating to launching national level assessments building upon the regional assessment 	<ul style="list-style-type: none"> • Strengthen knowledge about IPBES and the relationship between IPBES and NFPs / NFP engagement • Organise capacity-building workshops and meetings for NFPs/decision makers • Demonstrate examples on how the report can be translated into policy • Develop protocol or best management practice to support take-up of key messages • Organise science-policy dialogue meetings at national and sub-national level • Enable regional learning and support networks
<ul style="list-style-type: none"> • Lack of Involvement by stakeholders at local and national levels. 	<ul style="list-style-type: none"> • Develop a robust communication strategy for dissemination of the assessment and for engaging stakeholders.

<ul style="list-style-type: none"> • Lack of ownership and low capacity of key institutions/sectors for implementation and uptake 	<ul style="list-style-type: none"> • Establish fora for dissemination, raising awareness and for promoting uptake. • Collaborate with other relevant actors on projects and activities (including co-financing). • Work with public institutions and civil society to ensure ownership and buy-in • Initiate awareness raising initiatives • Integrate measures/policies into other sectors
<ul style="list-style-type: none"> • Lack of political will and commitment 	<ul style="list-style-type: none"> • Develop sensitising strategy to build capacity of and engage high-level officers. • Organise sensitising workshops/meetings for decision makers, including relevant ministries and government members • Develop strategy on how to address politically sensitive issues • Organise workshop for authors with journalists/other professionals on how to present these type of sensitive but important findings

5. Summary

This section summarises the evaluation and main outputs from the meeting of relevance for the further work on capacity-building under the auspices of IPBES.

- Participants stressed the importance of dialogue and collaboration across the science-policy interface between IPBES experts and NFPs, noting that this strengthens knowledge and engagement, lowers threshold to contribute to review processes at regional and national level, and increases **sustained involvement and ownership to the IPBES processes**.
- It was noted that the regional dialogue meetings provided good platforms for **peer learning**. A large proportion of the NFPs suggested that more frequent meetings and interactions would lead to more **functional NFP networks** that are better equipped to share best practices and experiences to strengthen national capacities for engaging in the production and use of IPBES deliverables.
- **Language** was flagged as a debilitating factor hampering the ability to engage in IPBES processes, particularly in Africa. It was argued that in order to facilitate national engagement in all regions it is crucial to develop materials in all UN languages and provide translation services during meetings.
- Participants recommended organising **future dialogue meetings during** or ahead of external review periods to ensure maximum benefits for both IPBES experts and NFPs.
- The main identified **challenges related to the uptake and use** of the regional assessments include lack of capacity, lack of political will, ownership and buy-in at national level. Furthermore, the general nature of the regional assessments makes uptake of assessment findings difficult as customised key messages and suggestions for specific policy actions are needed for successful advocacy efforts.

- **Further enhancing national capacities** for engaging in the production of IPBES deliverables and promoting their use and uptake into local, national and regional policy is seen as key for delivering the envisioned outcomes of IPBES.



Annex 1 (Summary report: Regional Dialogue Meetings):

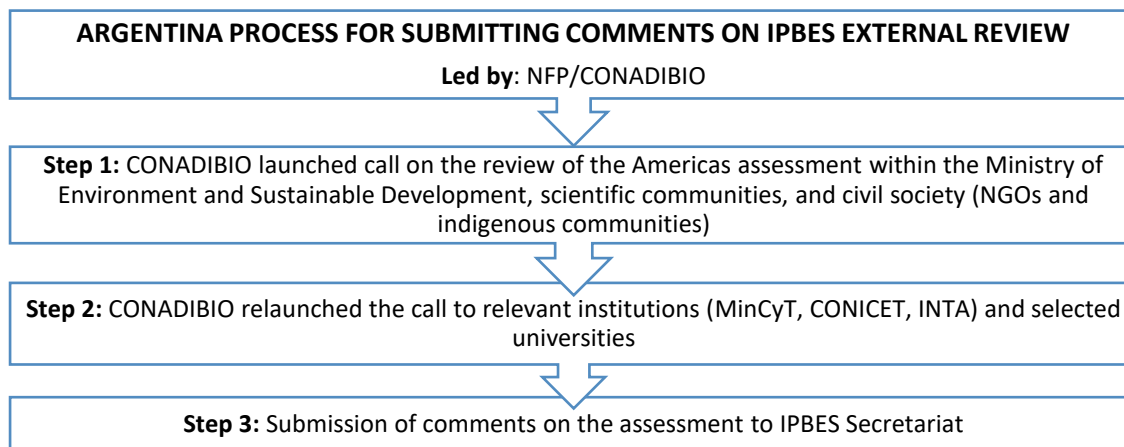
Examples of national processes established by National Focal Points to submit comments to the IPBES external review process

Governments' involvement is key to increase credibility, quality and legitimacy of the IPBES assessments, ensure policy relevance, and stimulate ownership and uptake of assessment findings. During the regional dialogue meetings the countries who had submitted comments under the external review process of the second order draft the ongoing regional assessments on biodiversity and ecosystem services were invited to share their experiences. The approaches applied varied considerably between countries, both with regards to time and resources invested, methods applied, as well as the number and type of stakeholders involved.

The summarised versions of the processes established by NFPs in the external review demonstrate the breadth of approaches and might serve as inspiration for future IPBES external review processes.

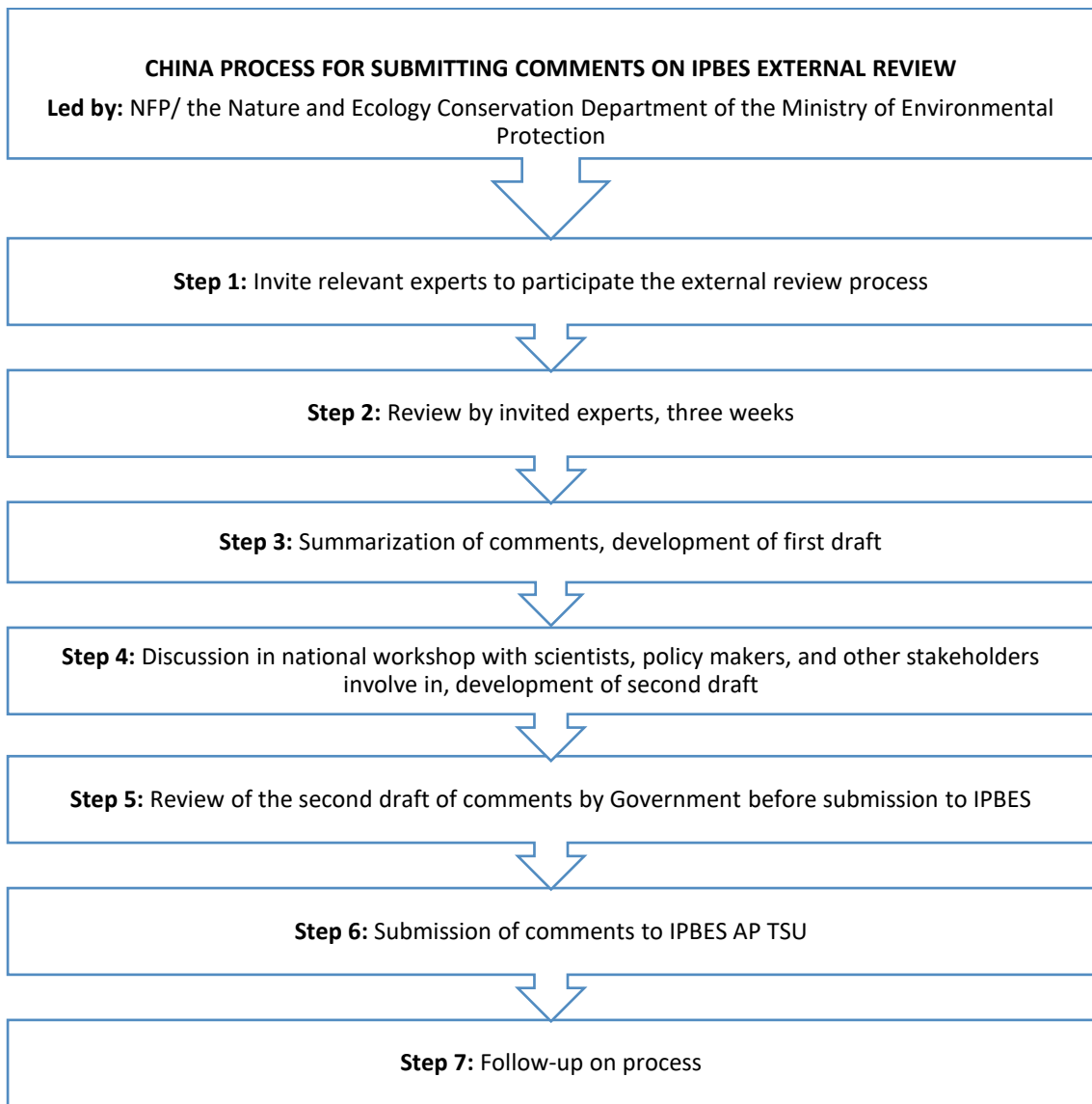
Example of Argentina

The National Advisory Commission for the Conservation and Sustainable Use of Biological Diversity (CONADIBIO) in Argentina launched a call to inform scientific communities, civil society, and the Ministry of Environment and Sustainable Development about the review of the Americas assessment. In addition, the CONADIBIO made a target call to the Ministry of Science, Technology and Productive Innovation (MinCyT), the National Scientific and Technical Research Council (CONICET), the National Agricultural Technology Institute (INTA) and relevant universities. In the call, the experts were asked to submit comments directly to the IPBES Secretariat with copy to CONADIBIO to enable follow-up action. The national process of Argentina is described in the figure below.



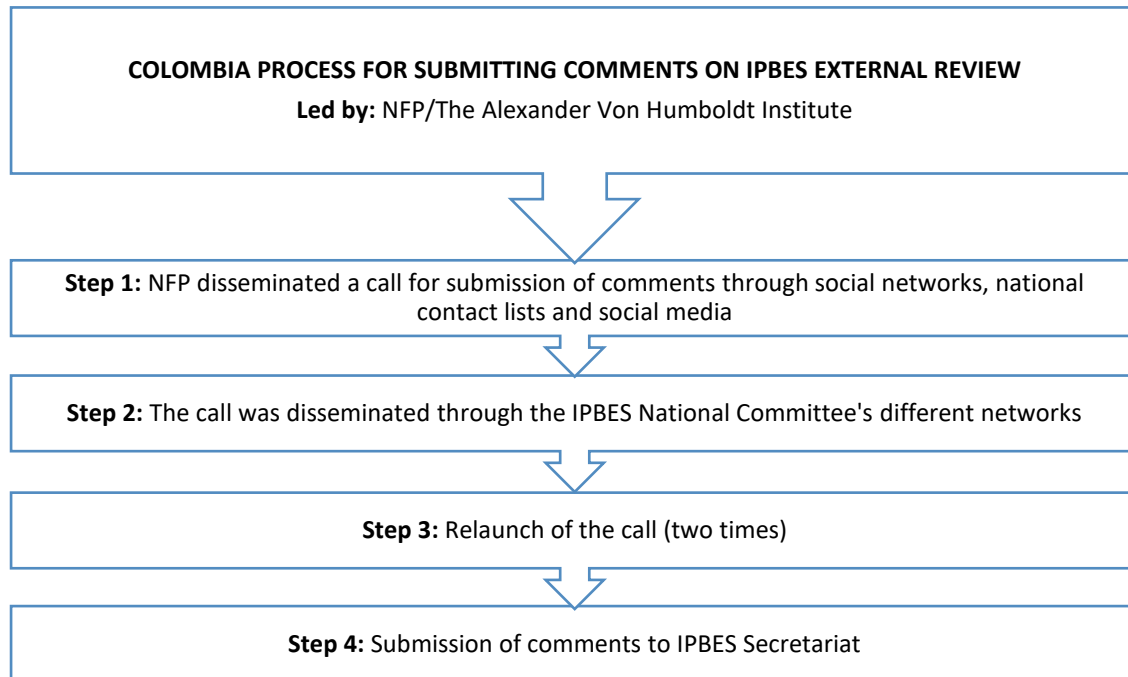
Example of China

The NFP of China and the Nature and Ecology Conservation Department of the Ministry of Environmental Protection initiated the external review process of IPBES assessments by a process to select and invite relevant experts to contribute to the review. The selected experts were given three weeks to review the report and their contributions were compiled in the first draft of comments. The NFP organised a national workshop to further refine comments. The Government reviewed the second draft of comments and submitted their comments to the IPBES Asia Pacific Technical Support Unit (AP TSU). Figure below presents the steps in the national review process in China.



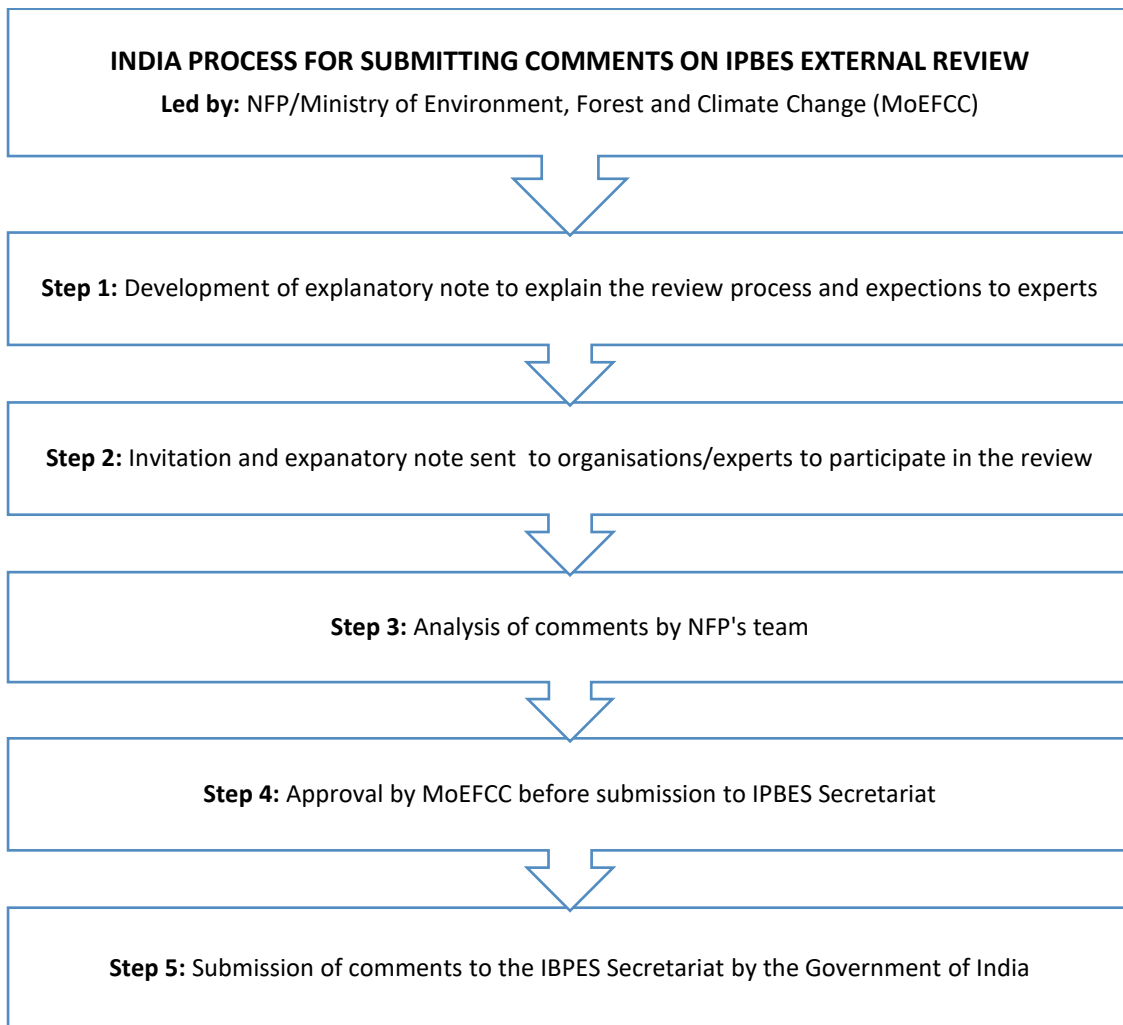
Example of Colombia

The NFP of Colombia launched a broad call on the review process using different outreach approaches through e.g. social networks, national contact lists and the IPBES National Committee. The aim was to reach out to as many interested parties as possible, to disseminate the call widely and to give the experts freedom to respond as they saw fit. The approach taken by Colombia is presented in the figure below.



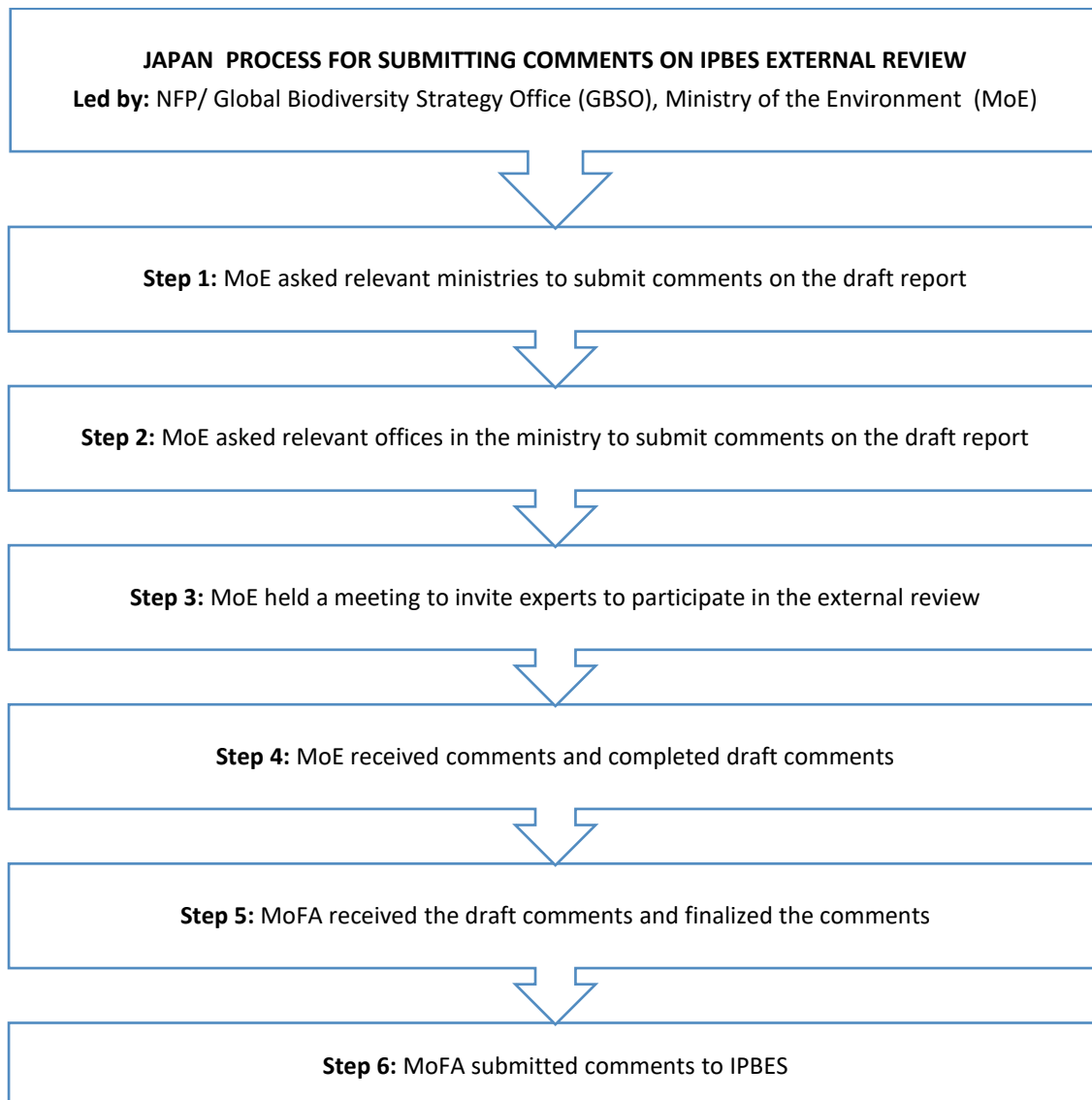
Example of India

In preparation for the review process, the NFP of India developed an explanatory note that was attached to the call inviting organisations/experts to participate in the review process. The experts were encouraged to widely disseminate the call in their networks and to submit comments directly to IPBES Secretariat and/or to Ministry of Environment, Forest and Climate Change (MoEFCC) as input to prepare India's official responses to IPBES. Prior to the submission of comments to the IPBES Secretariat, the NFP's team examined and analysed the comments received from experts, focusing on information relevant for India. The whole national process took two months and is visualized in the figure below.



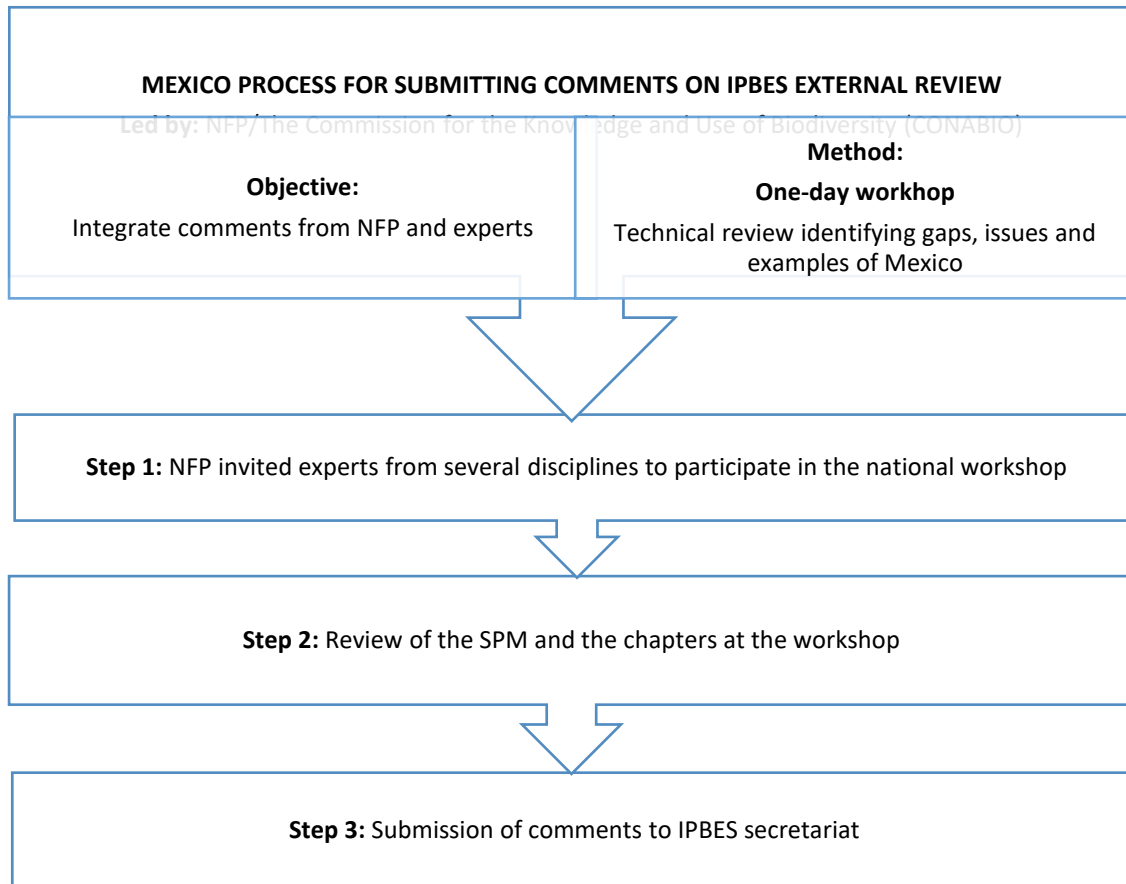
Example of Japan

The Global Biodiversity Strategy Office (GBSO) of the Ministry of the Environment (MoE), initiated the national process for submitting comments in the IPBES external review by asking relevant ministries to submit comments to the draft Asia Pacific assessment. The MoE highlighted relevant paragraphs to be reviewed by indicated departments and divisions and followed up with specific departments in relevant ministries. In addition, MoE held a meeting for experts providing information on the process. MoE prepared a draft government review based on the comments received by the ministries and presented the draft to the Ministry of Foreign Affairs (MoFA) for final approval and submission to IPBES secretariat, as outlined below in the figure.



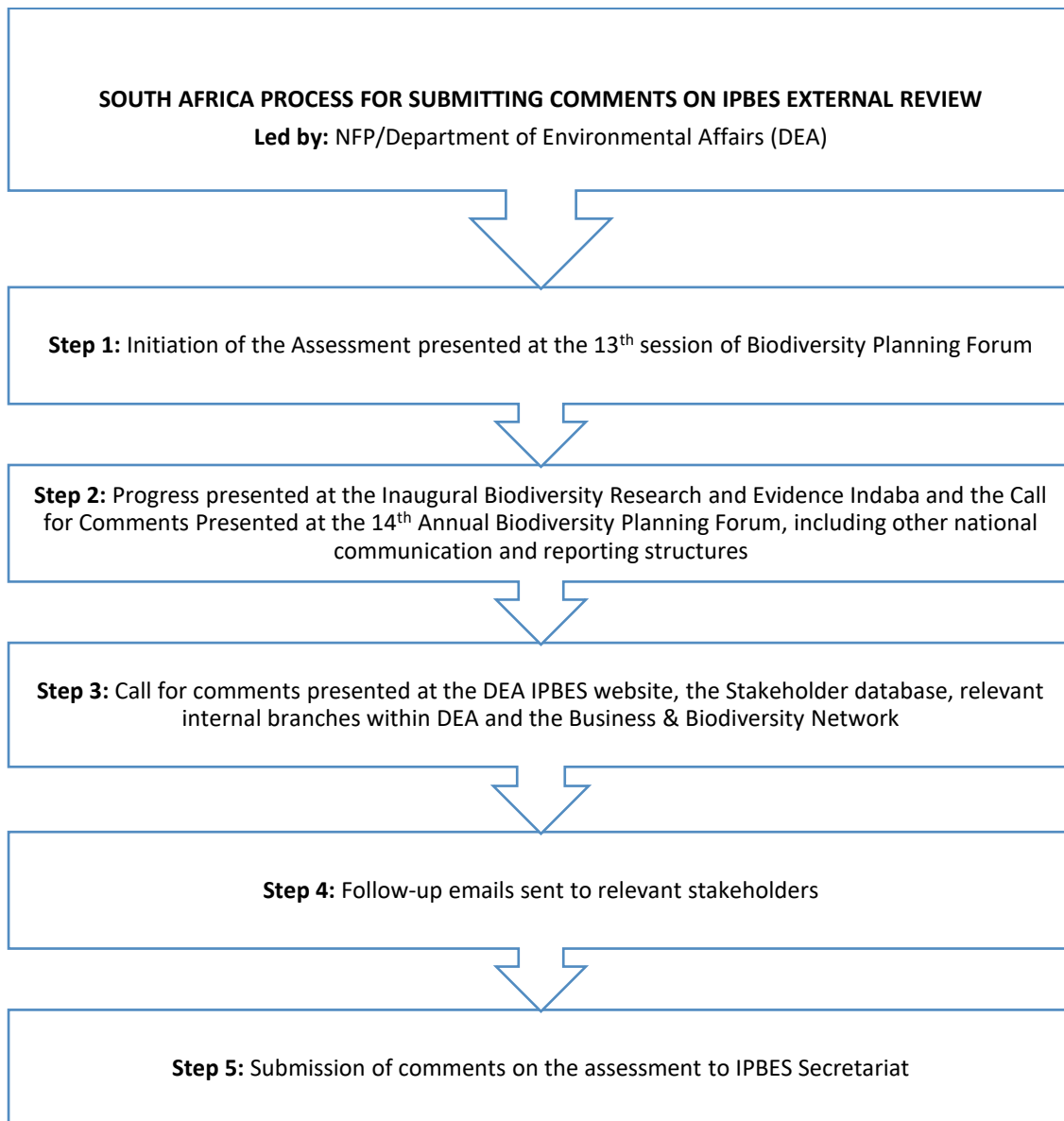
Example of Mexico

Mexico organized a national workshop inviting experts from several disciplines (earth and social sciences) to integrate comments from NFPs and experts in the Americas assessment. The experts were asked to review the draft Summary for Policymakers (SPM) and the chapters of the Americas assessment and to prepare and/or submit their comments prior to the workshop. At the workshop experts were requested to technically review and evaluate the contents of the chapters and SPM, and provide specific comments identifying gaps, issues, and examples from Mexico. The figure below presents the steps in the national process of Mexico.



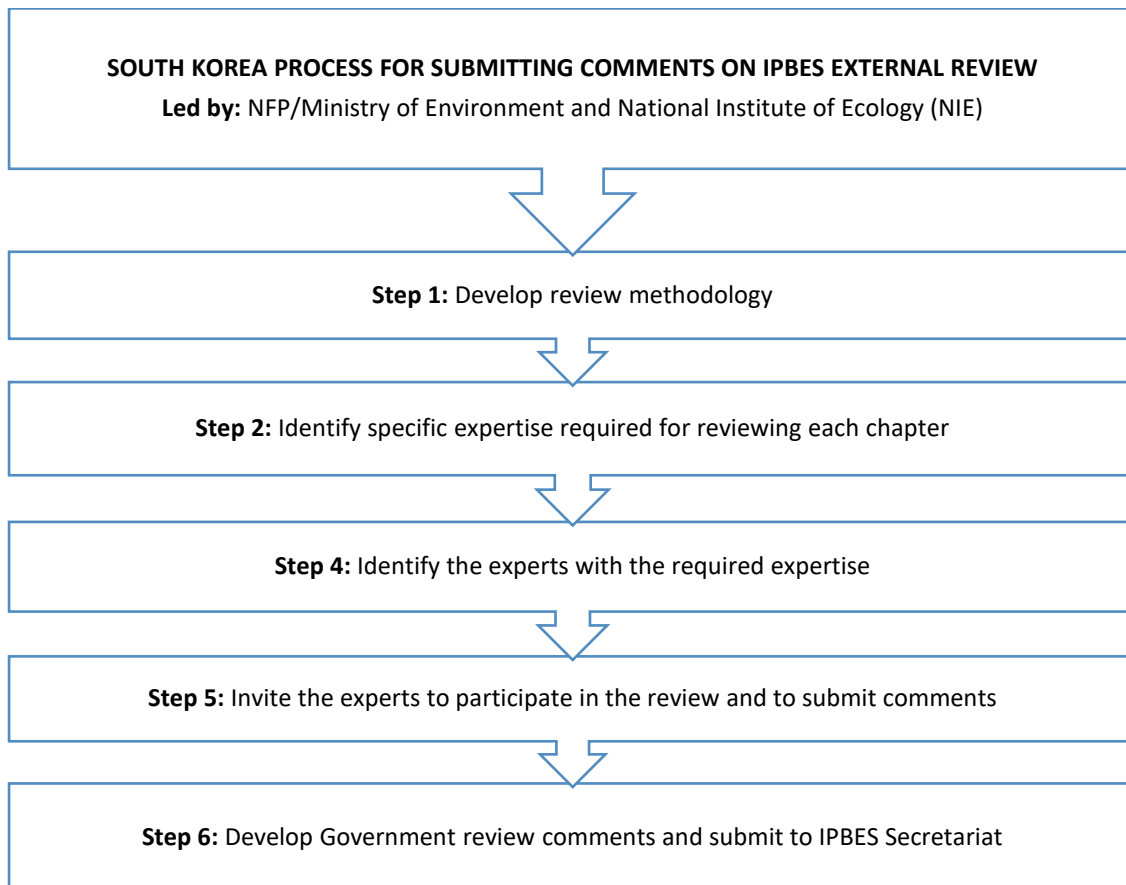
Example of South Africa

On-going work to produce the Africa assessment was presented at the 13th session of Biodiversity Planning Forum of South Africa & the Inaugural Biodiversity Research & Evidence Indaba. The focus was to engage the experts and other stakeholders particularly the science policy fraternity on the assessment process from the beginning. The call for submitting comments on the IPBES assessment was presented at the 14th session of the Biodiversity Planning Forum. Moreover, the call was distributed through many different channels as listed in figure below describing the process and actions taken by South Africa on the review process of IPBES assessments.



Example of South Korea

The South Korea national process on submitting comments on the draft Asia Pacific assessment was led by the Ministry of Environment (designated IPBES National Focal Point), and the National Institute of Ecology (NIE). The first step of the process, as visualized in figure 8 below was to develop a review methodology. Following this step, the scientific expertise requirements for each chapter were identified and process of identifying experts took place. Experts with the required expertise were invited to review the Asia Pacific assessment and to submit their comments. In South Korea, main review points were the completeness of the report, representativeness of the Asia-Pacific region, parts that needed more explanation or information, and cases by country. The national process is illustrated in the figure below.



Appendix 4 – Contributing organisations/institutions and actions implementing the IPBES capacity-building rolling plan

The task force is undertaking an incremental approach to building collaboration and engagement with the wide range of organisations and institutions involved in capacity-building activities relating directly to the IPBES work programme and the identified priority capacity-building needs approved by the IPBES Plenary. There is an open invitation to all institutions looking to contribute to IPBES' work on capacity-building on the capacity-building page of www.IPBES.net.

A list of contributing organisations and institutions can be found below.

Activities and contributions to the implementation of the IPBES capacity-building rolling plan are listed in an annex of actions to the IPBES capacity-building rolling plan. A simplified version of this annex of actions is provided in table 1 below. The table includes activities planned and implemented by IPBES¹⁷ and partners, including complementary capacity-building activities by other organisations and institutions. Activities by partners are self-reported and based on the priorities and criteria for implementing the strategies under the rolling plan. The strategies under the capacity-building rolling plan are (1) learning and engagement, (2) facilitating access to expertise and information, and (3) strengthening national and regional capacities.

The capacity-building task force aims to continuously update and make available a comprehensive list of actions on the IPBES website.

List of contributing organisations/institutions

<i>Organisation/Institution</i>	<i>Acronym</i>
Addis Ababa University	AAU
African Biodiversity Network	ABN
Asia-Pacific Network for Global Change Research	APN
Association of Southeast Asian Nations (ASEAN) Centre for Biodiversity	ACB
Basque Centre for Climate Change	BC3
Centre for Resource Management and Environmental Studies, University of the West Indies	CERMES, UWI
Department of Life Sciences, The University of the West Indies	Department of Life Sciences, UWI
Deutsche Gesellschaft für Internationale Zusammenarbeit - ValuES	GIZ
Ecosystem Services Partnership	ESP
Forest Peoples Programme	FPP
French Foundation of Research on Biodiversity	FRB
Fundación para la Conservación de los Recursos Naturales y Ambiente en Guatemala	FCG
Future Earth	FE
German Network-Forum for Biodiversity Research	NeFo
Global Biodiversity Information Facility	GBIF
Helmholtz Centre for Environmental Research	UFZ
Institute for Biodiversity - Network e.V.	IBN
Institute for Global Environmental Strategies	IGES
Institute of Ecology and Botany of the Hungarian Centre for Ecological Research	MTA-ÖK
Inter-American Institute for Global Change Research	IAI
International Union for Conservation of Nature	IUCN

¹⁷ IPBES includes all relevant subsidiary bodies under IPBES contributing to the capacity-building activities, including bureau, the multidisciplinary expert panel, task forces, expert groups, the assessment management committees, and the secretariat, including technical support units.

<i>Organisation/Institution</i>	<i>Acronym</i>
Ministry of Environment Japan	MoEJ
Ministry of Forestry and Water Affairs in Turkey	MoFWA
Norwegian Environment Agency	NEA
Norwegian Institute of Marine Research	IMR
Secretariat of the Convention on Biological Diversity	SCBD
South African National Biodiversity Institute	SANBI
Stockholm Resilience Centre - SwedBio	SRC, SwedBio
The Ethiopian Biodiversity Institute	EBI
The Japan Agency for Marine-Earth Science and Technology	JAMSTEC
United Nations Development Programme, Biodiversity and Ecosystem Services Network	UNDP, BES-Net
United Nations Environment Programme World Conservation Monitoring Centre	UNEP WCMC
United Nations University Institute for the Advanced Study of Sustainability	UNU-IAS
University of Trinidad and Tobago	UTT
West African Biodiversity and Ecosystem Services	WABES
Wildlife Institute of India	WII
Center for Development Research, University of Bonn	ZEF

Table 1
List of activities implementing the IPBES capacity-building rolling plan¹⁸

<i>Strategy</i>	<i>Initiative</i>	<i>Activity</i>	<i>Time</i>	<i>Lead organisation and partner(s)</i>	<i>Type of contribution</i>	<i>Region</i>
Strategy 1: Learning & Engagement	IPBES fellowship programme	Call for fellows and selection of fellows (IPBES land degradation and restoration assessment and four IPBES regional assessments)	2015	MEP, and assessment management committees	IPBES trust fund	Global
		Fellows' day: First introduction to IPBES and its assessment processes and the fellowship programme prior to the land degradation and restoration assessment first author meeting	2015	IPBES capacity-building task force, with support from the assessment authors	IPBES trust fund	Global
		Fellows workshop: Objectives: 1) to develop a learning network amongst the IPBES fellows; 2) to share lessons and reflections from the first author meetings; and 3) to ensure that the fellows have an understanding of the ecosystem assessment process and how assessments can be utilised	2015	IPBES capacity-building task force, with support from the assessment authors	IPBES trust fund	Global
		Fellows' day for the fellows of the global assessment: First introduction to IPBES and the fellowship programme. Experience sharing with existing fellows	2016	IPBES capacity-building task force, with support from the assessment team	IPBES trust fund	Global

¹⁸ Abbreviations used in table: BDI Biodiversity Informatics, CB- Capacity-building, CBMIS - Community Based Monitoring and Information Systems, ECA - Europe and Central Asia, ECS- Early Career Scientists, GA- Global assessment, ILK- Indigenous and Local Knowledge, IPLC- Indigenous Peoples and Local Communities, LDR- Land Degradation and Restoration, MC- Management Committee, MEP- Multidisciplinary Expert Panel, NEA-DE- National ecosystem assessment of Germany, PESC-4- 4th Pan-European IPBES Stakeholder Consultation, RCE- Regional Centres of Expertise, SPI- Science Policy Interface, SPM- Summary for Policymakers, TF- Task Force, TSU- Technical Support Unit.

Strategy	Initiative	Activity	Time	Lead organisation and partner(s)	Type of contribution	Region
		Call for fellows and selection of fellows (IPBES Global assessment)	2016	IPBES MEP, management committee of the global assessment	IPBES trust fund	Global
		Fellows' workshop: Workshop to strengthen fellows' capacity to contribute to their respective assessments through training and exchange of experiences among fellows on all the assessments	2017	IPBES capacity-building task force, with support from the assessment authors and the Basque Centre for Climate Change	IPBES trust fund & in-kind contribution	Global
		Fellows' participation in author meetings (first author meeting, second author meeting, third author meeting and chapter meeting of the land degradation and restoration, global and regional assessments)	Ongoing	IPBES	IPBES trust fund	Global
		Fellows' workshop: Training workshop focusing on the policy side of the science-policy interface. Fellows of the land degradation and restoration, global and regional assessments. To be held in Medellin, Colombia in March 2018	2018	IPBES, with support from the Norwegian Environment Agency and Future Earth	IPBES trust fund & in-kind contribution	Global
		Project: IPBES GA Fellows-Future Earth Workshop, Medellín, Colombia in March 2018. The project aims to shape transformative thinking for the future of biodiversity and human well-being by engaging stakeholders and policy-makers through a focus on culture and the arts	2018	IPBES fellows of the global assessment, capacity-building task force, with support from Future Earth and the Norwegian Environment Agency	IPBES trust fund & in-kind contribution	Global
		Promote the Fellowship programme to our members/networks and at ESP's World and Regional conferences (emphasis on engagement of young ES-scientists (sub-group within ESP called YESS))	Ongoing	Ecosystem Services Partnership (ESP)	In-kind contribution	Global
	Support increased use and development of IPBES learning materials for capacity-building	IPBES e-learning to strengthen knowledge on IPBES and its deliverables	Ongoing	IPBES capacity-building task force and UNEP WCMC	IPBES trust fund & in-kind contribution	Global
		IPBES webinars to strengthen knowledge on IPBES and its deliverables	Ongoing	IPBES capacity-building task force and assessment experts	IPBES trust fund	Global
	Capacity-development activities in support of the ongoing IPBES assessments	Workshop in support of the scenarios and models chapters of the regional assessments of biodiversity and ecosystem services and of the land degradation and restoration assessment	2016	IPBES (scenarios and models management committee, with support from the capacity-building task force)	IPBES trust fund	Global
		Capacity-development writing workshop for the Europe and Central Asia assessment to build experts' capacities through hands-on training	2017	IPBES capacity-building task force and the management committee of the Europe and Central Asia assessment, with support from the Ministry of Forestry and Water Affairs in Turkey	IPBES trust fund & in-kind contribution	Western European and other States, Eastern European States, Asia Pacific States
		Capacity-development writing workshops for the Africa regional	2017	IPBES capacity-building task force, and the	IPBES trust fund & in-	African States

<i>Strategy</i>	<i>Initiative</i>	<i>Activity</i>	<i>Time</i>	<i>Lead organisation and partner(s)</i>	<i>Type of contribution</i>	<i>Region</i>
		assessment to build experts' capacities through hands-on training		management committee of the Africa assessment, with support from the Norwegian Environment Agency	kind contribution	
		Capacity-building workshop to develop summary for policy makers on the land degradation and restoration and the regional assessments (Africa, Asia Pacific and Americas).	2017	IPBES capacity-building task force, with support from the participating assessments, with support from the Norwegian Environment Agency	IPBES trust fund & in-kind contribution	Global
		Capacity-building workshop to develop summary for policymakers on the global assessment	2018	Management committee of the IPBES global assessment, with support from the capacity-building task force and the Norwegian Environment Agency	IPBES trust fund & in-kind contribution	Global
		Capacity-building sessions at 3 rd Pan-European IPBES Stakeholder Consultation (PESC-3) meeting for European and Central Asian stakeholders to comment on the first order draft of the European and Central Asia assessment	2016	NeFo, FRB and partners (Belspo, Swiss biodiversity forum, and IPBES-pt)	In-kind contribution	Western European and other States, Asia Pacific States
		Capacity-building sessions at 4 th Pan-European IPBES Stakeholder Consultation (PESC-4) meeting for European and Central Asian stakeholders to comment on the second order draft of the European and Central Asia assessment	2017	FRB, MTA-ÖK, NeFo, with support of IPBES capacity-building task force and the management committee of the Europe and Central Asia assessment	In-kind contribution	Western European and other States, Asia Pacific States
		Capacity-building session for French stakeholders to comment on the second order draft of the land degradation and restoration assessment	2017	FRB	In-kind contribution	Western European and other States
	Strengthen science-policy interface on biodiversity and ecosystem services	Americas regional dialogue meeting: 2- day meeting to strengthen government engagement in the production and use of the regional assessments, and to provide insight for assessment experts into how their assessment are perceived and received by Governments	2017	IPBES bureau, IPBES capacity-building task force, and the management committee of the Americas assessment, with support from the Norwegian Environment Agency	IPBES trust fund & in-kind contribution	Latin American and Caribbean States
		Asia Pacific regional dialogue meeting: 2- day meeting to strengthen government engagement in the production and use of the regional assessments, and to provide insight for assessment experts into how their assessment are perceived and received by Governments	2017	IPBES bureau, IPBES capacity-building task force, and the management committee of the Asia Pacific assessment and partners (JAMSTEC, MoEJ, IGES and APN)	IPBES trust fund & in-kind contribution	Asia Pacific States
		Africa regional dialogue meeting: 2- day meeting to strengthen government engagement in the production and use of the regional assessments, and to provide insight for assessment experts into how their assessment are perceived and received by Governments	2017	IPBES bureau, IPBES capacity-building task force, and the management committee of the Africa assessment and partners (EBI and Norwegian Environment Agency)	IPBES trust fund & in-kind contribution	African States

Strategy	Initiative	Activity	Time	Lead organisation and partner(s)	Type of contribution	Region
		Europe and Central Asia regional dialogue meeting: 2- day meeting to strengthen government engagement in the production and use of the regional assessments, and to provide insight for assessment experts into how their assessment are perceived and received by Governments	2017	IPBES bureau, IPBES capacity-building task force and its TSU, and the management committee of the Europe and Central Asia assessment and partners (MTA-ÖK, FRB and NeFo)	IPBES trust fund & in-kind contribution	Western European and other States, Eastern European States, Asia Pacific States
	Promoting and offering support for activities planned or initiated by IPBES	Supporting the IPBES fellowship programme and the training and familiarization activities, incl. adding an IPBES component to IAI's workshop	Ongoing	Inter-American Institute for Global Change Research (IAI)	In-kind contribution	Latin American and Caribbean States
		1) Supporting the strengthening and expansion of the IPBES fellowship programme; 2) Promoting academic exchange between members of IPBES subsidiary bodies, expert groups, task forces, secretariat and technical support units and WII faculty; and 3) Offering onsite capacity building and customised training programmes for a multitude of stakeholders in the arena of Biodiversity Conservation.	Ongoing	Wildlife Institute of India (WII)	In-kind contribution	Asia Pacific States
		1) Contribution to the Africa technical support unit 2) Support to regional seminars organised by values, Americas and Africa technical support units	2017-2018	Stockholm Resilience Centre, SwedBio	Combinations	Global
Strategy 1: Learning & engagement	Strengthen science-policy-society interface on biodiversity and ecosystem services	BSPIN, the Biodiversity Science-Policy Interfaces Network for Early Career Scientists (ECS): Activities promoting 1) interaction between young scientists and with other stakeholders in science-policy interface (SPI) processes, 2) capacities of ECS to engage in global biodiversity-related SPIs, 3) inter- and transdisciplinary research, 4) communicate the potential of ECS regarding IPBES (and related SPIs), and 5) encourage practical involvement of ECS in these SPIs.	Ongoing	Group of ECS, with support from NeFo	In-kind contribution	Global
	Support increased engagement and knowledge about IPBES and its deliverables through offering complement	GIZ ValuES project ¹⁹ : regional workshops with IPBES content in South America (2016) and South-East Asia (2017); and francophone West Africa (2018)	2016-2017	GIZ ValuES, WABES, GIZ bilateral projects	In-kind contribution	Global
		ValuES training related to IPBES products (e.g. IPBES guide on multiple values) in 20 countries	Ongoing-2018	GIZ ValuES, WABES, GIZ bilateral projects	In-kind contribution	Global
		HIGRADE: Graduate school of the Helmholtz Centre for Environmental Research: Education of graduate	Ongoing	UFZ	Alignment	Western European

¹⁹ The ValuES project is implemented by the Deutsche Gesellschaft für Internationale Zusammenarbeit (GIZ) in close collaboration with the Helmholtz Centre for Environmental Research (UFZ) and the Conservation Strategy Fund (CSF), on behalf of the German Federal Ministry for the Environment, Nature Conservation, Building and Nuclear Safety (BMUB) as part of the International Climate Initiative (ICI).

Strategy	Initiative	Activity	Time	Lead organisation and partner(s)	Type of contribution	Region
	tary activities	students on science-policy interfaces and on IPBES				and other States
		Delivery of undergraduate and postgraduate biodiversity related courses and training	Ongoing	Department of Life Sciences, UWI, with partners (University of Suriname, University of Belize, University of the West Indies, Mona Campus)	Alignment	Latin American and Caribbean States
		Adaptive Ecosystems Management for Improvements of Ecosystems Functions and Sustainable Utilization of Ecosystems Services in Ethiopia: 1) To develop local capacity in Ecosystems service assessment and valuation; and 2) To develop models for ecosystems service evaluation and elucidate the benefits that can be sustainably harnessed from enhanced ecosystems services. The project will contribute towards green growth strategy of Ethiopia	Ongoing	Addis Ababa University and partners	In-kind contribution	African States
		1) Offer GBIF guidance and training materials as standard resources for IPBES capacity building needs; 2) Making training and mentoring activities available for wider application based on IPBES requirements	Ongoing	GBIF Secretariat, GBIF participant nodes, regional nodes groupings and partners	In-kind contribution	Global
Strategy 2: Facilitating access to expertise & information	Promoting and offering support for activities planned or initiated by IPBES	Initiative to provide access to expertise and "Data and Knowledge exchange", strengthen the linkage between ESP's working groups and IPBES, and make ESP's network of National Networks and Regional Chapters more structurally linked to IPBES	Ongoing	Ecosystem Services Partnership (ESP)	Alignment	Global
		Network of indigenous and local knowledge (ILK) Centres of Distinction: Mechanism for delivering inputs into IPBES by indigenous and local knowledge holders themselves. The network is open-ended and will operate in a transparent manner to facilitate the participation and contribution of diverse knowledge views and evidence from all regions	Ongoing	Forest Peoples Programme (FPP)/African Biodiversity Network (ABN)	In-kind contribution	Global
	Support effective use of indigenous and local knowledge in assessments and other relevant deliverables and dialogue	Support to a group of indigenous peoples and local communities with experiences from negotiations in the CBD to participate in the IPBES plenary meetings 1,2,3,4 and 5	2013-2017	Stockholm Resilience Centre, SwedBio and partners (Tebtebba Foundation and Forest Peoples Programme)	In-kind contribution	Global
		1) Contribute methodologies of Regional Centres of Expertise on Education for Sustainable development (Global RCE Network) of indigenous and local knowledge into IPBES work programme and assessments; 2) Create case study reports to contribute to IPBES case study	Ongoing	UNU-IAS		Global

<i>Strategy</i>	<i>Initiative</i>	<i>Activity</i>	<i>Time</i>	<i>Lead organisation and partner(s)</i>	<i>Type of contribution</i>	<i>Region</i>
	among different knowledge systems	database; 3) Contribute to the review of existing global, regional and assessments as and when available; and 4) Engagement with the International Partnership for the Satoyama Initiative for developing biodiversity and ecosystem services knowledge products through a bottom up approach				
		Strengthening indigenous peoples and local communities' own initiatives and efforts to contribute their knowledge, and develop methods for how to do it, such as the Community Based Monitoring and Information Systems (CBMIS)	Ongoing	Stockholm Resilience Centre, SwedBio	In-kind contribution	Global
		Supporting activities that mobilize indigenous and local knowledge and help bringing it into IPBES process, and initiatives facilitating dialogue and understanding across knowledge systems	Ongoing	IUCN	In-kind contribution	Global
	Support increased access to data, information and knowledge through developing the necessary capacities	Biodiversity Information for Development project: Training materials for application of open-access data to meet priority needs for policy and research. Curriculum development and workshop scheduled for April 2018	Ongoing	GBIF, SANBI and partner (EU DEVCO)	In-kind contribution	Global
		Training to strengthen the mobilisation of biodiversity data, foster regional engagement and enhance capacity in biodiversity information management; Support to the Joint BIMF-FBIP Forum to strengthen networks and expertise in data and information; Training to enhance capacity in the area of georeferencing of biodiversity data; and regional training courses in "Data and Management and Use" through the project Human Capital Development in Biodiversity Informatics (BDI)	Ongoing	SANBI and partners (GBIF, JRS Biodiversity Foundation, University of Kansas and the University of Ghana)	In-kind contribution	African States
		Explore opportunities for facilitating and promoting the use of policy support tools and methodologies through more effective implementation of the IPBES catalogue	Ongoing	IPBES capacity-building task force working together with the technical support unit on policy support tools and methodologies.	In-kind contribution	Global
		Contribute to increase access to data and information relevant to IPBES deliverables	Ongoing	Inter-American Institute for Global Change Research (IAI)	In-kind contribution	Global
		Produce scientific evidence on the importance of integrated approaches of molecular systematic, biodiversity information, indigenous and local knowledge and functional adaptation of plants to mitigate climate change	Ongoing	Addis Ababa University and partners	In-kind contribution	African States
		Nansen Programme: Strengthening the knowledge base and implementing an ecosystem approach to marine fisheries in developing countries, (GCP/INT/003/NOR)	Ongoing	Norwegian Institute of Marine Research and partners (NORAD and FAO)	In-kind contribution	African States

<i>Strategy</i>	<i>Initiative</i>	<i>Activity</i>	<i>Time</i>	<i>Lead organisation and partner(s)</i>	<i>Type of contribution</i>	<i>Region</i>
		Case study analysis on different themes to data and knowledge and the policy support tools database and conduct ecosystem assessments within the Regional Centres of Expertise (RCEs) and see how they can link to national processes including indigenous and local knowledge	Ongoing	UNU-IAS	In-kind contribution	Global
		Contribution to the mobilisation of and access to biodiversity and conservation data, information, and knowledge against agreed IUCN Standards for, e.g. the Red List of Threatened Species, Key Biodiversity Areas, and Protected Planet	Ongoing	IUCN	In-kind contribution	Global
		Project: Capacity building for biodiversity conservation among Community Based Organizations projects funded under the Tropical Forest Conservation Fund's Small Grants Program in Guatemala. The objective of the project is to build capacities among community based indigenous organizations stakeholders, on gathering, use and management of data and information on biodiversity conservation indicators; and the practices that made possible their achievement	Ongoing	Fundación para la Conservación de los Recursos Naturales y Ambiente en Guatemala (FCG)	In-kind contribution	Latin American and Caribbean States
		Two projects: 1) Research on biodiversity and ecosystem assessment and conservation relevant to Trinidad and Tobago and the region, and 2) Knowledge sharing: the extensive zoological collection will be digitized and made available to the public via a searchable online database	Ongoing	Department of Life Sciences The University of the West Indies, with partner GBIF	In-kind contribution	Latin American and Caribbean States
Strategy 2: Facilitating access to expertise & information	Support increased engagement and knowledge about IPBES and its deliverables through offering complementary activities	Biodiversity Conservation and Protected Area Management in ASEAN (BCAMP): 1) Strengthen capacity of ASEAN Centre for Biodiversity to support the ASEAN regional agenda and ASEAN Member States in biodiversity conservation and protected area management and 2) Develop and mobilize knowledge and scientific basis for biodiversity conservation, especially in existing and new ASEAN Heritage Parks	2017-2022	ASEAN Centre for Biodiversity (ACB)	In-kind contribution	Asia Pacific States
		Initiative to improve protected area decision-making, through promoting multi-stakeholder engagement, networking with IPBES, and availing biodiversity, livelihood and decision-making data and information	Ongoing	CERMES, the University of the West Indies, and partners (incl. IUCN)	In-kind contribution	Latin American and Caribbean States
		Capacity-building dialogue with Eastern European stakeholders, Budapest in April 2016	2016	IPBES capacity-building task force, with support from the Hungarian Academy of Sciences and Corvinus University	IPBES trust fund & in-kind contribution	Eastern European States

<i>Strategy</i>	<i>Initiative</i>	<i>Activity</i>	<i>Time</i>	<i>Lead organisation and partner(s)</i>	<i>Type of contribution</i>	<i>Region</i>	
Strategy 3: Strengthening national & regional capacities	Strengthen science-policy interface on biodiversity and ecosystem services	Strengthen science-policy interface on biodiversity (research) for Germany to: 1) Provide scientific support for national activities related to IPBES; 2) Mobilise the German biodiversity research community; and 3) Communicate and provide multiplication-effects around the theme of biodiversity, with emphasis on IPBES (Com, CB)	2009-2018	NeFo and UFZ	Alignment	Western European and other States	
	Task group 4: guidance science-policy platforms and assessments	Developing guidance to support countries and (sub-) regions in establishing their own science-policy platforms and networks, and/or in carrying out national and sub-regional assessments	2017	Task group 4: IPBES secretariat, capacity-building task force and partners: UNEP-WCMC, NeFo/WABES/UFZ, ValuES/GIZ, GBIF, BES-Net/UNDP, and IUCN	IPBES trust fund & in-kind contribution	Global	
	Support the development of national and regional platforms and networks	PESC-4 meeting: Meeting to strengthen stakeholder engagement in IPBES and support for establishing national platforms in the Europe and Central Asia region, including exchange with other platforms		2017	FRB, NeFo, MTA-ÖK and IPBES, with financial partial support from Swiss Biodiversity Forum, and Belgian Biodiversity Platform	In-kind contribution	Western European and other States, Eastern European States, Asia Pacific States
		Europe and Central Asia - Network (network of organisations engaged in IPBES): Overarching goal to support the national platforms, and provide a common space for sharing knowledge, resources, opinions and lessons learnt regarding IPBES		Ongoing	NeFo and Belgian Biodiversity Platform, with additional national platforms	In-kind contribution	Western European and other States, Eastern European States, Asia Pacific States
		1) Development of networks and communities of practice: sharing information on existing communities of practice so that IPBES can learn from the experience, and also build on what already exists; and 2) Support the development of an approach for carrying out national capacity self-assessment		Ongoing	Inter-American Institute for Global Change Research (IAI)	In-kind contribution	Latin American and Caribbean States
		Offer to provide technical expertise to develop national level BES assessments and to perform national level self-assessments in accordance to IPBES framework		Ongoing	Wildlife Institute of India (WII)	In-kind contribution	Asia Pacific States
		Continued development of GBIF national node network and regional collaboration, exploration of how best to integrate with national and regional platforms to support IPBES activities		Ongoing	GBIF Secretariat, GBIF participant nodes, and regional nodes groupings	In-kind contribution	Global
		IUCN offers to support the location of necessary technical experience, and opportunities to learn from the experience of others; activities that facilitate the uptake of IPBES findings in national and international policy;		Ongoing	IUCN	In-kind contribution	Global

<i>Strategy</i>	<i>Initiative</i>	<i>Activity</i>	<i>Time</i>	<i>Lead organisation and partner(s)</i>	<i>Type of contribution</i>	<i>Region</i>
		and the work of transforming knowledge into a local context				
		Both BES-Net and UNEP-WCMC are working to support development of national stakeholder engagement through BES-Net multi-stakeholder dialogues, and through the support provided to national ecosystem assessments (described elsewhere). Amongst other things these networks are being exposed to IPBES deliverables	Ongoing	UNDP/BES-Net and UNEP-WCMC, as part of a joint project funded by the German IKI.	In-kind contribution	Global
	Support for national ecosystem assessments	UNEP-WCMC is working with organizations in four countries in three regions to carry out national ecosystem assessments which support national objectives. As part of the project national capacity is being developed, and experience shared. Negotiations are under way to extend this to a further four countries	Ongoing	UNEP-WCMC, and currently national partners in Cameroon, Colombia, Ethiopia and Viet Nam. There are additional technical partners, and UNEP-WCMC is working with support from UNDP and German IKI	In-kind contribution	Global
		1) Supporting the Biodiversity Planning Forum, Mapping Biodiversity Priorities; and 2) Strengthening the species and ecosystem assessment capabilities in selected countries	Ongoing	SANBI and partners (SCBD, UNEP-WCMC and IUCN)	In-kind contribution	African States
		ESP has a strong network of experts worldwide and offers to mobilise members to contribute to IPBES national ecosystem assessments	Ongoing	ESP	In-kind contribution	Global
		IUCN supports the location of technical experience, and opportunities to learn from the experience of others, training and networking support specifically tailored to the needs of assessments and promotion and use of IPBES guides and catalogues in planning and carrying out assessments	Ongoing	IUCN	In-kind contribution	Global
Strategy 3: Strengthening national & regional capacities	Support national capacity self-assessment	IUCN has a strong national footprint, and offers to mobilise member organisations/scientists in supporting/promoting: 1) the development of an approach for carrying out national capacity self-assessment; 2) countries in carrying out their national capacity self-assessment; and 3) the mobilisation of relevant individuals/experts in carrying out the assessment	Ongoing	IUCN	In-kind contribution	Global
		Open offer to use of GBIF capacity self-assessment tool and adaptation/integration with wider IPBES self-assessment needs	Ongoing	GBIF Secretariat, GBIF participant nodes, regional nodes groupings and partners	In-kind contribution	Global
		University initiatives including: 1) Training and support the IPBES fellowship programme; 2) Facilitating National Capacity Self-assessment; and 3) Promoting National and sub-regional Ecosystem Assessments	Ongoing	University of Trinidad and Tobago	In-kind contribution	Latin American and Caribbean States

<i>Strategy</i>	<i>Initiative</i>	<i>Activity</i>	<i>Time</i>	<i>Lead organisation and partner(s)</i>	<i>Type of contribution</i>	<i>Region</i>
Strategy 1 & Strategy 3	Promoting and offering support for activities planned or initiated by IPBES	Support the strategies through: 1. Nomination of experts for different assessments; 2. Support to increase uptake of IPBES assessments and products; 3. Integration of IPBES work into RCE action plan and contribution to its work programmes and various task forces; and 4. Linking with multiple stakeholders in sub-regions across different continents and with existing networks such as the Biodiversity and Community Health Initiative, UNEP ABS GEF project etc.	Ongoing	UNU-IAS	In-kind contribution	Global
		WABES: Initiative supporting the West African (WA) contribution to IPBES, including the following components: 1) Masters programme for students from 15 WA countries, implemented in Côte d'Ivoire (workshops and online), 2) Training to increase knowledge and methodological know-how about IPBES and its work programme and deliverables, 3) Online community of practice around Biodiversity and Ecosystem Services in WA formed via workshops and other activities; and 4) Awareness raising related to IPBES/biodiversity and ecosystem services among governments and stakeholders, supporting establishment of communities of practice and national platforms in the WA region. WABES regional workshop, Abidjan, Côte d'Ivoire 28-30 November 2017	2017-2022	ZEF	In-kind contribution	African States
Strategy 1 & Strategy 3	Support increased engagement and knowledge about IPBES and its deliverables through offering complementary activities	Project: IPBES capacity-building. Main goal of the project is to enhance the capacity of governments, scientists and organizations in the target regions South-East-Europe, Eastern Europe and Central-Asia to meaningfully participate in IPBES processes. IPBES capacity building workshop held in South-East Europe, Sarajevo, Bosnia-Herzegovina on 16-17 October 2017	Ongoing	Institute for Biodiversity - Network e.V. (ibn).	In-kind contribution	Eastern European States, Asia Pacific States
	Task group 1: Guidance - capacity-building rolling plan	Develop guidance regarding processes and mechanisms that support the implementation of the capacity-building rolling plan	Ongoing	Task group 1: IPBES secretariat, capacity-building task force and partners (SCBD, ValuES/GIZ, NeFo/WABES/UFZ), IUCN and UNU-IAS)	IPBES trust fund & in-kind contribution	Global
All three strategies	Task group 2: Web portal	Develop a capacity-building web portal supporting the implementation of the capacity-building plan	Ongoing	Task group 2: IPBES secretariat, capacity-	IPBES trust fund & in-	Global

Strategy	Initiative	Activity	Time	Lead organisation and partner(s)	Type of contribution	Region
				building task force and UNEP-WCMC	kind contribution	
	Task group 3: Use and uptake	Strategic engagement with policy makers on use and uptake of regional assessments	Ongoing	Task group 3: IPBES secretariat, capacity-building task force and partners (UNEP-WCMC, BES-Net/UNDP, WII, GIZ ValuES, NeFo/WABES/UFZ), and IBN)	IPBES Trust fund & in-kind contribution	Global
	Supporting use & uptake of the IPBES assessments and products	Regional workshop on agrobiodiversity focused on mainstreaming biodiversity in agriculture for sustainable development and food security, Chiang Mai, Thailand in September 2017	2017	ACB, partnership with SEARCA (Southeast Asia Regional Centre for Agriculture) on Agrobiodiversity	In-kind contribution	Asia Pacific States
		The BES-Net “Dialogues” are multi-stakeholder dialogues focusing on specific policy questions at the national and regional levels. By facilitating fruitful discussions among the three BES-Net communities of policy, science and practice, the Dialogues contribute to addressing specific policy issues to help unlock shifts in the development trajectory of societies towards sustainability. The Dialogues bridge the divide between the science, policy and practice communities through intercultural dialogue; create a shared space for the joint assessment of regionally-relevant knowledge and the co-creation of locally appropriate policy options; and build a common agenda for action. The Dialogues are supported by online networking and collaboration tools hosted on the BES-Net web-portal. 1 st Regional Dialogue held: BES-Net Dialogue on Pollinators, Food Security and Rural Development, 18-20 Oct. 2017 Sarajevo, Bosnia and Herzegovina. BES-Net also supports experience sharing between the countries engaged in undertaking their national assessments	Ongoing	UNDP/BES-Net Network and its 85 Partners	In-kind contribution	Global
		Uptake of IPBES products on national level in the existing ValuES Community of Practice	Ongoing	GIZ ValuES and partner UNU, GIZ bilateral projects	In-kind contribution	Global
		ESP Regional Conferences in 2018, MENA-region (Jordan), Asia (India, with WII), Europe (Spain) and Latin America (Brazil). Opportunities to strengthen IPBES activities in these regions	2018	ESP	In-kind contribution	Global
	Task group 5: IPBES learning materials	Identify existing and potential sources of learning materials, facilitate their use and support their development	Ongoing	Task group 5 IPBES secretariat, CB TF and partners: WABES/ZEF, NeFo/UFZ, ValuES/GIZ, IUCN, UNU-IAS, BES-Net/UNDP, and IBN	IPBES trust fund & in-kind contribution	Global

<i>Strategy</i>	<i>Initiative</i>	<i>Activity</i>	<i>Time</i>	<i>Lead organisation and partner(s)</i>	<i>Type of contribution</i>	<i>Region</i>
	Arena for dialogue with contributing organisations	5 th meeting of the IPBES task force on capacity-building	2017	IPBES capacity-building task force and partners, with contribution from the Norwegian Environment Agency	IPBES trust fund & in-kind contribution	Global
		1 st meeting of the IPBES capacity-building Forum	2015	IPBES capacity-building task force, with contribution from WII	IPBES trust fund & in-kind contribution	Global
		2 nd meeting of the IPBES capacity-building Forum	2016	IPBES capacity-building task force and partners, with contribution from UNDP and UNEP	IPBES Trust fund & in-kind contribution	Global
	Promoting and offering support for activities planned or initiated by IPBES	BES-Net web-portal and online communication and platform: BES-Net shares IPBES calls for action, IPBES information and IPBES products through its website, newsletter and newsletter outlets. BES-Net provides technical support and offers access to online networking and collaboration tools and to the wider BES-Net community	Ongoing	UNDP/BES-Net Network and its 85 Partners	In-kind contribution	Online
		Promoting opportunities and providing technical support and resources to IPBES capacity-activities. Sharing of information on existing communities of practice so that IPBES can learn from the experience, and also build on what already exists	Ongoing	IUCN	In-kind contribution	Global
	Support increased engagement and knowledge about IPBES and its deliverables through offering complementary activities	Short-term Action Plan (2017-2020) to Enhance and Support Capacity-Building for the Implementation of the Convention and its Protocols: Synergy and potential joint actions between the IPBES Capacity-building Rolling Plan and the Short-term Action Plan (2017-2020) to Enhance and Support Capacity-Building for the Implementation of the Convention and its Protocols as well as the BBI Action Plan 2017-2020	2017-2020	SCBD, and various partners	Alignment	Global
		Actions to strengthen collaboration between the CBD and IPBES on capacity-building, through the Bio-Bridge Initiative, including 1) Using various tools, mechanisms and services, including the helpdesk service, an interactive web platform, regional roundtables and a small seed funding support. 2) Making use of the BBI web platform to inform/support existing IPBES communities of practice and networks on different topics; and 3) Making use of BBI help desk	Ongoing	SCBD	Alignment	Global
		Capacity Building Project for the IPBES Asia-Pacific Regional Assessment; it includes 1) Integration of ILK into the regional assessment, 2) Application of outcome of the thematic assessment for scenario analysis and	Ongoing	Institute for Global Environmental Strategies (IGES) and the Asia-Pacific Network for Global Change Research (APN)	In-kind contribution	Asia-Pacific

<i>Strategy</i>	<i>Initiative</i>	<i>Activity</i>	<i>Time</i>	<i>Lead organisation and partner(s)</i>	<i>Type of contribution</i>	<i>Region</i>
		models, 3) Policy support for policy makers and stakeholders to utilise the assessment outcomes, including organisation of a series of science-policy dialogue workshops at sub-regional level in 2018				
		GIZ ValuES project to provide technical and financial support to TSU on Values. Joint activities Developed and carried out under the Values TSU (e.g. workshops regarding the uptake of the guide on multiple values in IPBES regional (2016) and global assessments (2017); workshop on IPBES socio-ecological indicators (2017))	Ongoing-2018	GIZ ValuES and the IPBES expert group on values	Combination	Global
		Horizon scanning on ecosystem services (facilitating a future ecosystem assessment). An exercise to identify the most important research questions in order to further support the developments towards a potential national ecosystem assessment of Germany (NEA-DE)	Starting summer 2017	UFZ and partner (iDiv)	Alignment	Western European and other States